

ANNUAL REPORT 2016-17



EXCELLENCE WITH SOCIAL
RELEVANCE

TATA INSTITUTE OF SOCIAL SCIENCES
TULJAPUR OFF CAMPUS



**Tuljapur Off Campus
ANNUAL REPORT
2016-2017**



Tata Institute of Social Sciences



© Tata Institute of Social Sciences, 2017

Edited and Typeset by: Publications Unit, TISS Mumbai

Printed at India Printing Works, 42, G.D. Ambekar Marg, Wadala, Mumbai 400 031



Contents

1. Introduction.....	1
2. Towards Academic Excellence with Social Relevance.....	4
3. Publications, Research and Field Action Projects	5
4. Seminars, Conferences, Workshops and Invited Lectures	11
5. M.A. and M.Phil. Research Dissertations.....	18
6. Field Work and Experiential Learnings.....	25
7. Student Driven Academic, Cultural and Other Activities.....	29
8. Social Protection and Financial Aid.....	31
9. Collaborative Faculty and Student Exchange Programmes.....	32
10. Campus Infrastructure Development	35
11. Student Placements.....	37
12. Student Enrolment.....	39
13. Eleventh Convocation.....	40



Director's Message



As part of the Golden Jubilee Celebrations of the Institute in 1986, the Governing Board of the Institute gave its consent to establish a Rural Campus. The then Director of TISS, Prof. Armaity Desai requested the Government of Maharashtra to give land in a rural location that would not have implications to the people. Accordingly, a 100-acre piece of land was granted to the Institute on the outskirts of Tuljapur town in Osmanabad district to set up its Rural Campus.

In the initial years from 1986 to 1993, the focus of the Rural Campus was on working with communities in Tuljapur Taluka to address their immediate concerns. In 1993, following the Latur earthquake, teams from both the Tuljapur and Mumbai campuses were fully involved in the relief and rehabilitation work of fully and partially affected villages.

During the 10th Five Year Plan, the University Grants Commission (UGC) sanctioned faculty and staff positions that enabled the Institute to start a B.A. Social Work Programme with specialisation in Rural Development. Since then, the academic and research programmes have grown substantially.

I take this opportunity to thank Prof. Armaity Desai for envisioning the Rural Campus and laying a solid foundation for its growth. The then Deputy Director, Prof. Sarathi Acharya, and a dedicated team of Social Workers worked hard to create conditions for the development and welfare of vulnerable groups. We also thank Prof. Denzil Saldanha and Prof. Chhaya Datar for shouldering the responsibility of the Campus from 1995 to 2004.

Today, the Campus is fully developed and we thank the UGC, the Ministry of Human Resource Development of the Government of India, and the Tata Trusts for their continued support to develop the infrastructure and the academic programmes. We also thank the district administration of Osmanabad for their continued support.

Prof. S. Parasuraman

Director

Tata Institute of Social Sciences

May 2017



1

Introduction

The **Tata Institute of Social Sciences** (TISS) was established in 1936 as the Sir Dorabji Tata Graduate School of Social Work with the aim of creating human service professionals to work with and enable the marginalised people to overcome poverty, deprivation and unemployment. Today, the Institute keeps this vision alive through its extensive teaching, research, policy support, and field action programmes.

TISS has received a consistently high appreciation for academic excellence and is counted amongst the best universities in the country. The 3rd cycle of assessment by the National Assessment and Accreditation Commission (NAAC) rated TISS with a score of 3.89/4.00; the second highest score amongst all universities accredited by the NAAC thus far.

TISS is a centrally funded public university, and the Government of India (GoI) through the UGC provides the Institute's Plan and Maintenance Grants. It operates from four campuses located in Mumbai and Tuljapur (in Maharashtra), Guwahati (Assam), and Hyderabad (Telangana). The Institute has also expanded its education, training, research and outreach activities in other states through centres at Andaman and Nicobar Islands, Bihar, Chennai, Ladakh, Nagaland, New Delhi, Raipur, Ranchi, and Thiruvananthapuram. It has over 4,000 students on roll; with nearly one-fifth being Doctoral Scholars.

The **TISS Tuljapur Off Campus** was established in 1986 as its Rural Campus with the mission of promoting initiatives for sustainable, eco-friendly and equitable socio-economic development of rural communities. The Campus is built on a 100-acre land donated by the Government of Maharashtra.

Through its academic programmes, TISS Tuljapur seeks to contribute in the transformation and strengthening of rural economy, society, and polity and to promote alternatives in development. In order to achieve this, TISS Tuljapur has adopted a four-pronged strategy of teaching, research, training and field action. Over the years, it has built a strong team of academics and professionals drawn from Economics, Social Work,

Sociology, History, Agronomy, Geography, Political Science, Demography, Engineering, Mathematics and other related disciplines.

TISS Tuljapur conducts graduate and post-graduate academic programmes as well as training programmes with an approach that is based on equity, justice and sustainable development. With its location at the Tuljapur Tehsil headquarters, its proximity to rural communities, and by closely working with the Central, State and district administrations, the TISS Tuljapur Off Campus has started playing a significant role. It not only influences local self-governance in the region, but also contributes to the strengthening the overall capacities of the marginalised and vulnerable communities to access state programmes, live with dignity, and participate and negotiate with the State and other communities in the decision making processes.

Teaching Programmes

Between 1986 to 2004, TISS Tuljapur mainly served as the centre for research and field action with the initiation of community action projects as well as linkages with rural communities.

Based on its involvement with government agencies and programmes, business organisations, civil society groups and communities over time, the Campus has framed its larger role as a catalytic and transforming centre for influencing socio-economic changes in the right direction. In this regard, it has started developing responsible cadres of sensitive and sensible change agents, who can help steer the developmental processes in favour of the most deserving and marginalised sections of society. Towards this, the TISS Tuljapur Off Campus introduced a set of undergraduate and post-graduate programmes mandated with teaching, field engagements and carrying out relevant research and outreach activities.

Based on the experience gained, a B.A. (Hons.) in Social Work with Specialisation in Rural Development was launched in 2004, followed by an M.A. Programme in 2010. This launch of these two programmes also saw

the setting up of the **School of Rural Development** at TISS Tuljapur.

In 2012–13, the Integrated B.A.-M.A. programme in Social Sciences was launched, and in 2013, the PG Diploma programme in Water, Sanitation and Hygiene was started with partial assistance from the UNICEF, which has become an important partner in the delivery and promotion of this programme. In 2014, three new Master's programmes and the Integrated M.Phil.-Ph.D. were initiated.

The number of students in the Campus have grown from about 180 in 2013 to about 450 at present. Currently, the Campus has 24 faculty members drawn from a range of social and physical sciences

The main objective of developing such initiatives and programmes have been to make classroom based education more meaningful, relevant and practical to the core objectives of the TISS Tuljapur Off Campus, which has taken up the challenge of shaping the minds of youth and initiating a culture of responsible actions

Academic Programmes at TISS Tuljapur Off Campus at a glance:

A. Undergraduate Programmes

1. B.A. (Hons.) in Social Work with Specialisation in Rural Development
2. Five-year Integrated B.A.-M.A. Social Sciences

B. Master's Programmes

3. M.A. Social Work in Rural Development
4. M.A./M.Sc. in Development Policy, Planning and Practice
5. M.A./M.Sc. in Sustainable Livelihoods and Natural Resources Governance
6. M.A. in Social Innovations and Entrepreneurship

C. M.Phil./Ph.D. Programmes

7. Integrated M.Phil.-Ph.D. in Rural Development
8. Direct Ph.D. in Rural Development

D. PG Diploma Programme

9. PG Diploma in Water, Sanitation and Hygiene

FACING PAGE 

Top: Meeting with Hon'ble Governor of Maharashtra, Shri Ch. Vidyasagar Rao at Raj Bhavan, Mumbai, to discuss Farmer Support Services.

From L to R: Prof. Abdul Shaban (Deputy Director, TISS Tuljapur Off Campus); Prof. S. Parasuraman, Director TISS, and Dr. Prashant Narnaware, IAS, Collector Osmanabad

Bottom: Presentation of 'Report on Progress of Farmers' Group in Osmanabad District' to Hon'ble Chief Minister of Maharashtra, Shri Devendra Fadnavis by Prof. Abdul Shaban, Dr. Sri Krishna Sudheer Patuju, Dr. Sasmita Swain and Dr. Gunvant Birajdar





2

Towards Academic Excellence with Social Relevance

TISS has always offered path-breaking programmes and courses with innovative curriculum and pedagogy. Its research has been cutting edge and its outreach focussed and sustained. The Tuljapur Off Campus contributes to knowledge, policy, and practice in the same tradition.

It has been focussed about the diversification of academic programmes, by centreing, and recentring on the developments taking place in a fast-changing and globalising world.

The TISS Tuljapur Off Campus is a centre of regular discussions, debates, colloquia and invited lectures (outside the classroom) providing both faculty and students with unlimited scope for self-expression, assertions and contestations on the conviction that education is about critical inquiry. Both the intrinsic and instrumental roles of education inform such exercises and processes. Care is taken to ensure that in teaching and research, updating of knowledge is consciously done; even as equity, diversity and inclusive excellence are unswervingly adhered to. Special care is taken to see that campus ambience is not overlaid with retrograde values and practices.

The Tuljapur Campus is a lively centre of academic discourse and activities and is fast turning into an academic paradise. Students and faculty members of universities from across the world interact with the academic community at TISS Tuljapur. Our faculty and students participate in seminars organised by various

institutions and agencies. The faculty members deliver lectures and serve as members of academic and policy committees in India and abroad. Of late, their publications (books, articles and reports) are on the rise.

Presently, the TISS Tuljapur Off Campus is in a consolidation phase; a phase of infusing quality into every functioning aspect on a regular and sustained basis. This is part of an incessant process of self-renewal and repositioning and we are committing ourselves to:

- further enhance the number of peer reviewed journal articles per faculty;
- bring out publications that can affect policy change;
- increase the number of national/international seminars, conferences, workshops and training programmes organised every academic year;
- make TISS Tuljapur an Innovation Campus for higher education, viz, generation, collation, and transmission of knowledge are further catalysed and taken to a still higher plane,
- build an academic corridor with world-class universities so that there is flow of cutting-edge knowledge in a seamless world;
- remain socially relevant by widening and deepening academic social responsibility (ASR); and
- emerge as an avantgarde campus of the country, and of Marathwada region in particular.

3

Publications, Research and Field Action Projects

The TISS Tuljapur Off Campus brings out a number of socially relevant and academically meaningful publications every academic year. The Campus faculty and students, through field action projects, engage with rural communities to bring out transformative changes and to contribute to the development of the country.

The research and the field action projects mostly focus on the issues related to the rural development, livelihood and food security, community organisation and local self-governance, sustainable development, disaster management, health, education, Dalit, tribal, minority and women's empowerment, etc. When the Latur earthquake devastated the region in 1993, TISS Tuljapur took up the responsibility of extending a helping hand for the reconstruction of rural life in Osmanabad and Latur district. Similarly, drought mitigation programmes in this semi-arid region has been a major task taken up by the Campus through water conservation programmes and in drinking water supply.

The synergy between teaching, research, field action and extension programmes has enabled TISS Tuljapur to continue to shape policy and programme formulations, foster critical rethinking, and development of people-centred interventions.

Details regarding publications, research projects and field action projects carried out in the academic year 2016–17 are mentioned below:

Publications

Dr. Gunvant A. Birajdar

- *Farmers Stress Index*, Working Paper 1, Tuljapur: Tata Institute of Social Sciences, 2016 (co-author).
- Solution of Generalized Fractional Reaction-Diffusion Equations in terms of Mittag-Leffler Functions. *Proceedings of National Conference on*

Recent Trends in Mathematics, Chennai: Academic Sciences, 2016. [ISBN: 978-81-932712-0-9]

- Stability of Nonlinear Fractional Diffusion Equation, *Libertas Mathematica*, 36 (1), <http://www.ara-as.org/index.php/lm-ns/article/view/1289>, 1–12, 2016.

Dr. Kalpana Dixit

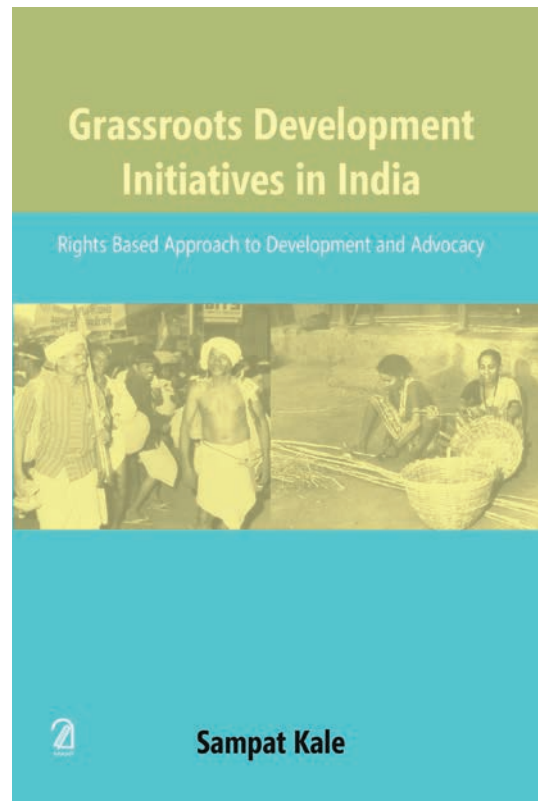
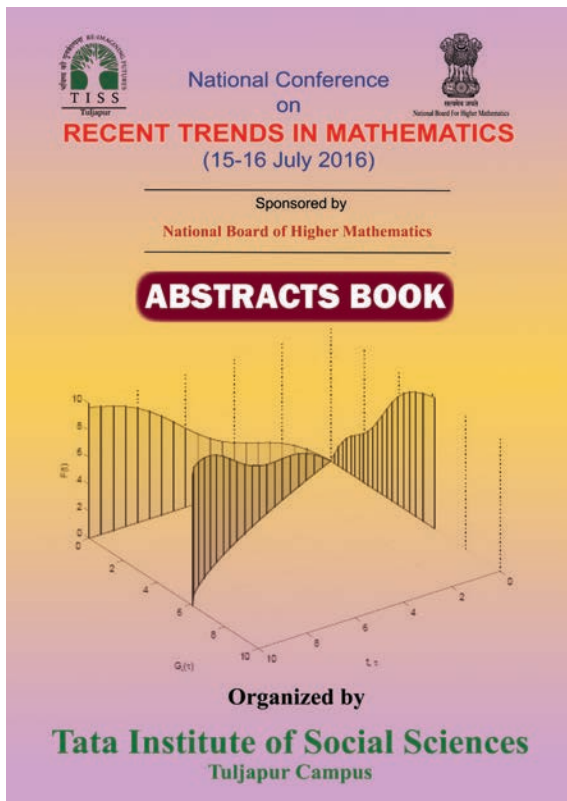
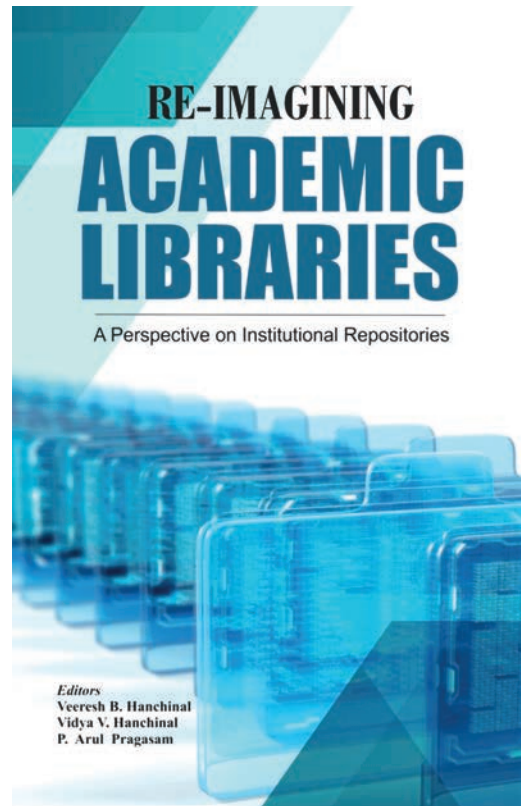
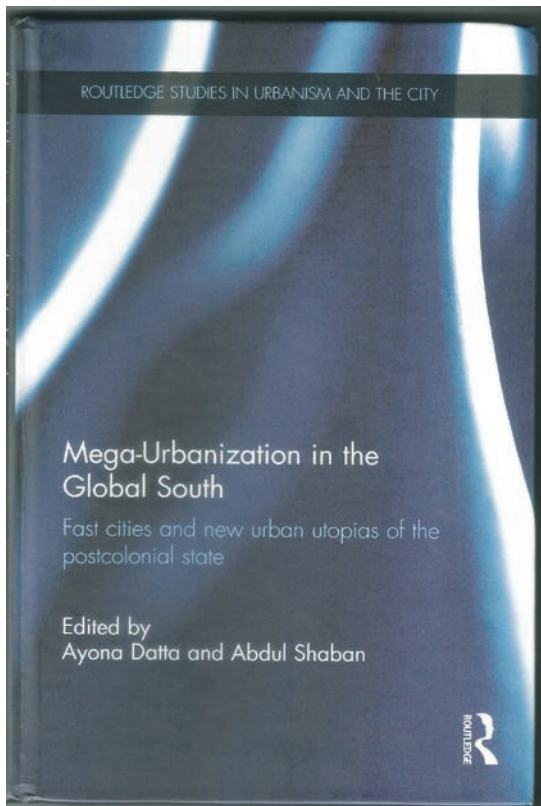
- Political Economy of Electricity Distribution in Maharashtra, Working Paper, Mapping Power Project, Centre for Policy Research and Regulatory Assistance Project, 2017.

Dr. Ramesh Jare

- Challenges for Sustainability and Replicability of Ideal Village: Learning for Professional Social Workers. In B.M. Dash and S. Roy (Eds.), *Field Work in Social Work Education: Contemporary Practices and Perspectives*, New Delhi: Atlantic Publishers & Distributors (P) Ltd, 2016. [ISBN: 978-81-269-2299-4].
- *Caste in Modern India: Atrocities Against Dalits in India*, New Delhi: Studium Press India, 2017. (co-editor) [ISBN-978-93-85046-11-7]

Dr. Sampat Kale

- A Study of Sustainable Livelihood Approaches to Poverty Reduction in Maharashtra, *International Journal of the Social Research Foundation*, 4 (2), 117–127, 2016. [ISSN: 2321-211X]
- Drought in Marathwada: Water Scarcity Worsening Situation in Marathwada, *International Journal of Innovative Research in Science, Engineering and Technology*, 5 (5), 8376–8384, 2016. (co-author) [ISSN: 2347-6710]
- People Centred Water Management Practices in Maharashtra. In A. Wadekar (Ed.), *Water Planning and Management* (Jal Niyojan and Vayasthapan), Pune: Vanarai Foundation, 2016.
- Teaching Sociology: Critical Reflections on Epistemology, Philosophy, Ontology and



Methodology, *International Journal of Innovative Research in Science, Engineering and Technology*, 5 (5), 8385–8391, 2016. (co-author) [ISSN: 2347-6710]

- Caste in Modern India: Atrocities against Dalits in India, New Delhi: Studium Press India, 2017. (co-editor) [ISBN-978-93-85046-11-7]
- Changing Nature of Caste and Caste based Atrocities against Dalits: A Case Study of Kharda, Ahamednagar Dist, Maharashtra. In R. Jare and S. Kale (Eds.), *Caste in Modern India: Atrocities Against Dalits*, New Delhi: Studium Press, 2017. [ISBN: 978-93-8504611-7]

Dr. Roopesh Kaushik

- Role of Teachers In Interest Generation and Prevention of Drop-Outs in Schooling of Rural Areas; A Study of 2 Schools in Kesla Block, Hoshangabad District, Madhya Pradesh. In R. Kaushik (Ed.), *Evaluating Education System in India: Tale of Hoshangabad District of Madhya Pradesh (M.P.) and Kandhamal District of Orissa in India*, Germany: LAP LAMBERT Academic Publishing, 2016. (co-author)
- Elementary Education and its Development in Phulbani Kandhamal District of Orissa. In R. Kaushik (Ed.), *Evaluating Education System in India: Tale of Hoshangabad District of Madhya Pradesh (M.P.) and Kandhamal District of Orissa in India*, Germany: LAP LAMBERT Academic Publishing, 2016. (co-author)
- Issues and Challenges Faced Under Government of India Food Security Programms. In R. Kaushik (Ed.), *Evaluating Government of India (Gol) Programmes: A Collection of Case studies on Socio-Economic Impact Assessment*, Germany: GRIN Verlag, 2016. (co-author)
- Role of Mahatma Gandhi National Rural Employment Grantee Act (MGNREGA) in Rural Development: A Study of Chaibasa & Jhikpani Blocks in West Singhbhum district of Jharkhand. In R. Kaushik (Ed.), *Evaluating Government of India (Gol) Programmes: A Collection of Case studies on Socio-*

Economic Impact Assessment, Germany: GRIN Verlag, 2016 (co-author)

- Impact Assessment of Integrated Watershed Management Programme: A Case Study of Barlai Village of Neemach District in Madhya Pradesh. In R. Kaushik (Ed.), *Evaluating Government of India (Gol) Programmes: A Collection of Case studies on Socio-Economic Impact Assessment*, Germany: GRIN Verlag, 2016. (Co-author)

Dr. Anjali Kulkarni

- *Entrepreneurial Process and Eco-system of Women Entrepreneurs: A Study from Drought Prone Region of Maharashtra*, Ahmedabad: Entrepreneurship Development Institute of India, Ahmedabad. 2017. [ISBN 978-93-80574-94-3]

Dr. Veeresh Hanchinal

- Librarian: An Essential Partner in Enhancing the Quality of Users Research. In D.C. Kar, P.K. Jain and P. Babbar (Eds.), *From Ownership to Access: Leveraging the Digital Paradigm*, New Delhi: Synergy Books India, 2016. [ISBN: 978-93-82059-46-2]
- *Re-imagining Academic Libraries: A Perspective on Institutional Repositories*, New Delhi: Ess Ess Publications, 2016. (co-editor) [ISBN: 9.78817E+12]

Dr. Sudheer Patoju

- *Farmers Stress Index*, Working Paper1, Tuljapur: Tata Institute of Social Sciences, 2016. (co-author)

Ms. Trupti Ratnaparkhi

- Autobiographies as a Means of Facilitating Multicultural Learning, *International Journal of English Language, Literature and Translation Studies*, 2(4), 184–190, 2015. [ISSN 2395-2628]
- A Different Take on Women's Sexuality: 'Thus Spake Soorpanakha, So Said Shakuni: 'Review', *English Studies International Research Journal*, 4(1), 40–45, 2016. [ISSN: 2347-3479]

Prof. Abdul Shaban

- Critical Reflection on Contemporary Urbanisation in India, *Shelter*, 17 (1), 31–39, 2016. (co-author) [ISSN: 2347-4912]
- Development Strategies in India. In L.S. Bhat, H. Ramachandran and R.N. Vyas (Eds.), *Economic Geography: Urbanisation, Industry and Development*, New Delhi: Oxford University Press, 2016.
- Muslim Citizenship, Identity and Violence in India. In K. Kannabiran (Ed.), *Violence Studies*, New Delhi: Oxford University Press, 2016.
- Muslim Girls in Urdu Medium Schools of Maharashtra: Progress, Retention and Aspirations, *Economic and Political Weekly* 51 (25), 65–70, 2016. [ISSN: 2349-8846]
- *Mega-urbanisation in the Global South: Fast Cities and New Urban Utopias of the Postcolonial State*, New York: Routledge, 2017. (co-editor) [ISBN: 1317754727, 9781317754725]
- Regional Divergence and Inequalities in India, *Economic and Political Weekly*, 52 (1), 102–110, 2017.
- Slow: Towards a Decelerated Urbanism. In A. Datta and A. Shaban (Eds.), *Mega-Urbanisation in the Global South: Fast Cities and New Urban Utopias of the Postcolonial State*, New York: Routledge, 2017. (co-author) [ISBN: 1317754727, 9781317754725]

Ms. Sasmita Swain

- *Farmers Stress Index*, Working Paper1, Tuljapur: Tata Institute of Social Sciences, 2016. (co-author)

Dr. Aparna Watve

- *Ovitla Landga*, Pune: Maharashtra Forest Department, 2014–2016. (co-editor).
- Problems Faced by Pastoralists of the Semi-arid Landscape in Tuljapur, Osmanabad. In S. Limaye, K. Landade, V. Athreya, A. Watve, and A. Khare (Eds.), *Ovitla Landga*, Pune: Maharashtra Forest Department, 2014–2016. (co-author).
- Worldwide Destruction of Inselbergs and Related Rock Outcrops Threatens a Unique Ecosystem. *Biodiversity and Conservation*, 25 (13), 2827–2830, 2016. (co-author) [ISSN: 0960-3115]

Dr. Neelam Yadava

- Dire Training Need of Women Entrepreneurs Engaged in Sericulture in Uttarakhand, *Research Journal of Agricultural Sciences*, 10 (9), 33–36, 2016. (co-author) [ISSN: 0976-1675]
- Impact of Watershed Development Projects on Women's Participation and Empowerment in Wardha District of Maharashtra, *International Journal of Multidisciplinary Research Review*, 1 (5), 148–152, 2016. [ISSN -2395-1877]
- Entrepreneurship Behaviour for Women Engaged in Sericulture: A Study In Uttarakhand, *Proceedings of Twelfth Biennial Conference on Entrepreneurship*, 711–717, 2017. [ISBN 978-93-80574-94-3]
- Changing Lens of Agripreneurial Opportunity by Bringing Agriculture and Nutrition Together: Review, *Indian Research Journal of Extension Education*, 17 (1), 18–23, 2017.



Women being trained in tailoring skills

Development of Tailoring Skills among Women from Marginalised Communities

Development of Tailoring Skills among Women from Marginalised Communities is a field action project which was started in June 2016, with the objective of training poor women from marginalised groups and help them gain employment or self-employment. Presently, a 3-month tailoring programme is being carried out from the Skill Development Centre, Osmanabad. During last year, 80 women from marginalised groups have been trained. The women from these groups have responded to this activity enthusiastically as it is helping them to not only develop skills, but also gain self-confidence to earn money.

As a follow-up of skill development, the selected women are guided to start their own ventures and further advance short term training will be given to them.

Research Projects

Title	Sponsor	Date of sanction	Status	Faculty
Creative Industries In India:Size, Geography and Potential	ICSSR, and Netherlands Organisation for Scientific Research	Jan 2016	Ongoing	Prof. Abdul Shaban
Socio-economic Study of Dhangar Community of Maharashtra	Ministry of Tribal Affairs, GoM	Mar 2016	Completed	Dr. Sampat Kale
Understanding Contributing Causes for Farmers' Distress in Osmanabad District, Maharashtra	District Agricultural Office, Osmanabad	May 2016	Ongoing	Prof. Abdul Shaban
Establishment of Herbal Garden at Tuljapur Campus for Capacity Building and Promotional Activities	Maharashtra State Horticulture and Medicinal Plants Board, Pune, under the aegis of National Medicinal Plants Board	May 2016	Ongoing	Dr. Neelam Yadav
ePG-Paathshala	UGC	May 2016	Ongoing	Dr. Aparna Watve
Social Impact Assessment of Redevelopment of Bhuleshwar Division, C-Ward, Bhendi Bazar, Mumbai	Saifee Burhani Upliftment Trust	May 2016	Ongoing	Prof. Abdul Shaban
Education Policy and its Impact on the Schooling for the Urban Poor: A Study of the Municipality Schools of Delhi	ICSSR	Jan 2017	Ongoing	Dr. Byasa Moharana

Field Action Projects

Name of the project	Commencement	Location	Sponsor	Activities	Status
Drought Mitigation Project	June 2013	Tuljapur and Osmanabad	Tata Motors, Pune	Creation and repair of water resources in villages	Ongoing
Development of Tailoring Skills in Women from Marginalised Communities	June 2015	Osmanabad	Tata Housing, Fazlani Aishabai & Haji Abdul Latif Charitable Trust, and Beanstalk, Mumbai	Skill development training to the women	Ongoing

4

Seminars, Conferences, Workshops and Invited Lectures

In 2016-17, faculty members of TISS Tuljapur Campus organised and participated in various conferences/seminars/ workshops at national and international levels. They also delivered lectures in various institutions. These seminars, conferences, workshops and invited lectures were on a range of issues that included public policy, agrarian crisis, political economy, research methodology, entrepreneurship, social work education, social movement, social audit and accountability, natural resource management, politics of development, nationalism and gender.

Dhaka Conference

One of the objectives of the TISS Tuljapur Campus has been to understand and learn from the development experience of other countries in rural and sustainable development and share the Indian experience with them. This mutual learning can be very helpful in the policy arena, besides the usual pedagogical and academic values.

In this, a specific focus has been on SAARC countries and their experience. The efforts, specifically, have been to help in realising the sustainable development goals by sharing evidence-based research and practical solutions. Toward this, an International Conference on Sustainable Development was organised by the School of Business and Economics, United International University, Dhaka, on February 16–18, 2017. Prof. Abdul Shaban was on the Advisory Board of the Conference and was also invited as a resource person to share the TISS Tuljapur Off Campus experience on teaching, research and interventions in sustainable development.

Consultation Workshops at Kabul University

TISS, with the support of UNICEF Afghanistan, and the Government of Afghanistan is engaged with the Department of Social Work of Kabul University, since 2015 to strengthen the teaching and research in Social Work at the University through experience sharing and organising workshops in relevant areas. The TISS

Tuljapur Off Campus has been an integral part of this process and its faculty members are contributing in the curriculum building of the undergraduate programme in Social Work and also strengthening the research components. In December 2015, Dr. Ramesh Jare and Mr. Rohit Jain were the part of the larger TISS expert group visiting Kabul University for this purpose. Based on the academic and pedagogical need assessments, a consultation-cum-capacity building workshop was organised at the University from February 27 to March 2, 2017. From the TISS Tuljapur Off Campus, Dr. Anjali Kulkarni and Prof. Abdul Shaban participated in the consultation-cum-capacity building workshop and held discussions with UNICEF officials, representatives of the Government of Afghanistan, and faculty members of Kabul University for strengthening academic cooperation between the two universities.

Workshop on Jalpurti Abhiyan

The Marathwada region is known for its droughts, and Osmanabad district has faced rainfall and drinking water shortages for the several years. TISS Tuljapur Campus organised a workshop on May 28, 2016, for Sarpanches in Tuljapur and Osmanabad blocks of the district to sensitise them on management of rainwater in the rainfall season and how to save water for the use of various purposes. The workshop was sponsored by Axis Bank.

This workshop was inaugurated by Dr. Deepak Sawant, Guardian Minister of the district and Minister for Public Health and Family Welfare, and Dr. Prashant Narnaware Collector of Osmanabad. About 200 Panchayat Raj representatives and village community leaders participated in the Workshop.

National Conference on Recent Trends in Mathematics

One of the objectives of the Tuljapur Campus has been to blend physical science, logical and mathematical elements and learnings, with social science curriculum. The Integrated B.A.-M.A. in Social Science curriculum has been framed accordingly. To popularise the

sciences and mathematics among the social science and social work students, the Campus organised talks and public lectures besides holding a conference on advanced themes in these areas. A National Conference on Recent Trends in Mathematics was organised on July 15–16, 2016, with sponsorship from the National Board of Higher Mathematics, and the Department of Atomic Energy, Govt. At the conference, 74 papers were presented by researchers from various reputed academic universities of the country.

Rural Entrepreneurs Meet

Though many have entrepreneurial aspirations, they find it difficult to bring their ideas to reality, without any guidance and support. To address this issue, a

platform is required to inspire, motivate and guide the aspirants to realise their dreams. In fact, currently, there is hardly any specific platform to encourage rural entrepreneurs and their entrepreneurial aspirations.

TISS Tuljapur organised a rural entrepreneurs meet to address these issues and on February 5, 2017, the 1st Rural Entrepreneurial Meet was held. This meet brought together rural entrepreneurs, rural innovators and students for appreciating existing entrepreneurs in villages, and to create a platform to inspire (rural) youth and provide them with a platform to express their entrepreneurial aspirations. The programme also attracted 108 entries for three categories viz. Rural Entrepreneurs Award, Rural Innovators Award, and Futurepreneurs Award.

Conferences, Workshops, and Meets organised

Faculty	Programme Title	Place	Sponsor	Dates
Dr. Sri Krishna Sudheer Patoju	Workshop for Sarpanches in Osmanabad District	TISS Tuljapur	TISS Tuljapur	May 27, 2016
Dr. Gunvant A. Birajdar	Jalpurti Abhiyan	TISS Tuljapur	AXIS Bank	May 28, 2016
Dr. Gunvant A. Birajdar	National Conference on Recent Trends in Mathematics	TISS Tuljapur	National Board for Higher Mathematics	Jul. 15-16, 2016
Dr. Sri Krishna Sudheer Patoju	Rural Entrepreneurs Meet	TISS Tuljapur	TISS Tuljapur	Feb. 5, 2017
Mr. Rohit Jain	Understanding Budgets	TISS Tuljapur	TISS Tuljapur and Center for Budget and Governance Accountability, New Delhi	Feb. 17–19, 2017



1st RURAL ENTREPRENEURS MEET - 2017

Organized by



Tata Institute of Social Sciences



Sitting: Guests & Faculty

Standing: Rural Entrepreneur Awardees, Rural Innovator Awardees & Futurepreneur Awardees



Prof. D.B. Dhaigude

Prof. Abdus Salam

Prof. Abdus Salam

Seminars, Conferences and Workshops Attended and Lectures Delivered

Dr. Ramesh Jare

- Keynote Speaker at 'National Seminar on Financial Inclusion and Use of Technology', at Hirachand Nemchand College of Commerce, Solapur, on February 18, 2017.
- Keynote Speaker at 'State Level Seminar on Recent Trends in Social and Political Movement', at Appasaheb Jedhe Arts, Commerce and Science College, Pune, on January 10, 2017.
- Key Resource Person at 'Workshop on Participatory Rural Appraisal and Local Self-governance', Centre for Studies in Rural Development, Ahmednagar, on December 6-8, 2016.
- Participated in the 'National Symposium on Competencies, Compassion and Commitment', organised by the Centre for Studies in Rural Development, Institute of Social Work & Research, Ahmednagar, on April 7-8, 2017.

Mr. Rohit Jain

- Panel member for 'Assessment of Social Audit Field Reports as part of Training of Trainers Programme on Social Audit', Ranchi, Jharkhand, organised by Department of Social Audit, Jharkhand, and sponsored by Department of Rural Development, Jharkhand, on January 30-31, 2017.
- Resource Person for 'Participatory Training Skills in Social Audit Master's Training Workshop' at NIRD, Hyderabad, organised by TISS Mumbai and NIRD, Hyderabad, and sponsored by the Ministry of Rural Development, Gol, on September 8-9, 2016.
- Discussant for finalising 'Draft Social Audit Curriculum for Certificate Course in Social Accountability' organised by TISS Mumbai, on August 19, 2016.
- Key Resource Person for Seminar on 'Natural Resources Rights and Movements: Challenges and Strategies', organised by the Society for Change, Nagpur, on January 24, 2017.

- Resource Person for 'Roundtable Discussion on Drought and Water Crisis in Maharashtra', organised by Centre for People's Collective, Nagpur, August 21, 2016.
- Presented a Paper on 'From Precarious Work to Decent Work: A Case Study of the Struggle of Delhi Domestic Workers Union', at the 42nd All India Sociological Conference, Department of Sociology, Tezpur University, Assam, December 27-30, 2016.
- Participated in the Consultation on 'Climate Adaptation and Services for Water, Food, and Health Security' organised by WOTR-Pune, and Wageningen University-Netherlands, at Pune, April 20-21, 2017.

Dr. Anjali Kulkarni

- Presented a Paper on 'Innovations in Financial Inclusion of Urban Poor: A Model of Rahat Credit Cooperative Society, India', at the Social Enterprise Summit & the 4th International Conference on Social Enterprise in Asia, on September 24-25, 2016, at Hong Kong.
- Presented a Paper on 'Fieldwork in Social Work Education: A TISS Tuljapur Model of Fieldwork' at the International Conference on Social Work Education and Practice, organised by the Department of Social Work (UGC Centre of Advanced Study), Faculty of Social Sciences, Jamia Millia Islamia, New Delhi, on February 20-22, 2017.
- Presented a Paper on 'Entrepreneurial Process and Eco-system of Women Entrepreneurs: A Study from Drought Prone Region of Maharashtra', at the 12th Biennial Conference on Entrepreneurship, organised by Entrepreneurship Development Institute of India, Ahmedabad, February 23-24, 2017.

Mr. Bipin Das

- Delivered lecture on 'Livelihoods Issues and Drawing Pathways for Improved Quality of Life for the Landless and marginal Farmers in Southern Odisha', at Development Support Centre (DSC), Bhuwneshwar, Odisha, September 28, 2016.
- Discussant at the 'Strategy Formation Meeting on Public Health and Environment: Education,

Research and Capacity Building’, organised jointly by the PHFI and TISS at TISS Mumbai, December 7, 2016.

- Key Resource Person on the ‘Role of Young Professionals in WASH Sector Development’ at the Induction-cum-Orientation Programme of Young Professionals of WASH, New Delhi, as part of the UNICEF-TISS joint initiative, March 10, 2017.
- Delivered a Lecture on the ‘Role of CSOs in Food Security Issues in the Most Backward KBK Regions of Odisha’, in the Programme and Project Leaders Working on Food Security, Right to Food and Livelihoods Issues at the Office of the State Advisor to Commissioners, Supreme Court of India (CWP-196-2001), September 27, 2016.
- Delivered a Lecture on ‘The Critical Role and Strategies Required for Educational Institutions (Skill Development Centres) in Mobilising the GrassRoot and Local Civil Society Organisations for Development’, organised by the Centurion University at Parlakhemundi, Odisha, September 26, 2016.

Dr. Sampat Kale

- Participated in the National Seminar on ‘Development Strategies for the Marginalised Post-Twelfth Five Year Plan’, organised by the National Centre for Advocacy Studies, December 10-11, 2016.
- Presented a Paper on ‘Migration and Acculturation Among the Vulnerable Tribes in Maharashtra’ and Chaired the Session at the 42nd All India Sociological Conference, Tezpur University, Assam, December 27–29, 2017.
- Presented a Paper on the ‘Development Induced Displacement of Adivasis: Post-colonial Encounters’ at the National Conference on Tribes in Transition, Department of Sociology, University of Mumbai, January 19-20, 2017.
- Chairperson and Expert at the ‘State Level Seminar on Innovative Fieldwork Methods and Evaluations’,

organised by the School of Social Sciences, North Maharashtra University, Jalgaon, April 1, 2017.

Dr. Neelam Yadava

- Presented a Paper on ‘Entrepreneurship Behaviour for Women Engaged in Sericulture: A Study in Uttarakhand’, at the 12th Biennial Conference on Entrepreneurship, organised by the Entrepreneurship Development Institute of India, held on February 22–24, 2017.
- Presented a Paper on the ‘Changing Lens of Agripreneurial Opportunity by Bringing Agriculture and Nutrition Together: Review’, at the 8th National Extension Education Congress, 2017 on Nutrition Sensitive Agriculture: Changing Role of Extension, organised by the Society of Extension Education, Agra, and ICAR-National Academy of Agricultural Research Management, Hyderabad, January 28–31, 2017.
- Presented a Paper on ‘Ibtada-Catalytic Measure to Empower Women Entrepreneurship Skills: Case of Alwar, Rajasthan’, at the International Conference on Startup India Recipe for Inclusive Entrepreneurship and Innovation: Issues and Challenges, organised by Institute of Management Studies and Research, Maharshi Dayanand University, held on March 2–3, 2017.
- Presented a Paper on ‘Praxis of Entrepreneurial Skills among Women: Case Sstudy of Alwar, Rajasthan’, at the 2nd International Academic Conference on Entrepreneurship & Innovation in the Knowledge Economy, organised by Xavier Institute of Management and Entrepreneurship (XIME) in collaboration with University of Essex, held on March 30–31, 2017.
- Presented a Paper on ‘Green to Evergreen Revolution: Dire Need to Reforms in Agriculture Sector’, at the National Conference on Agricultural Renewal for Evergreen Revolution: Concept and Approaches, organised by the Gochar Educational and Welfare Society, Saharanpur, on March 10, 2017.

Dr. Sai Thakur

- Presented a Paper on 'What is Child Labour? Implications of a Theoretical Debate for the State Policy' at the 42nd All India Sociological Conference, Tezpur University, Tezpur, Assam, December 27-30, 2016.
- Delivered a Lecture on 'Nationalism of the Oppressed' (Upekshitancha Rashtravaad) in Vicharvedh Sammelan on the theme of Indian Nationalism: Nature, Concept and Challenges, organised at S.M. Joshi Auditorium, Pune, Maharashtra, January 20-22, 2017,

Dr. Niladri S. Dhar

- Presented a Paper on 'Labour Absorption in Agriculture and Number of Days of Employment: Analysis of Village Survey Data from Tripura' in Consultation Workshop on "Livelihoods, Homestead Farming and Human Development in Tripura," at Agartala, organised by Indian Statistical Institute, on March 18-19, 2017.
- Presented a Paper on 'Labour on Small Farms in India, at Conference on Small-scale Farming in India', organised by Foundation for Agrarian Studies, Thiruvananthapuram, on December 2–3, 2016.
- Delivered two lectures on Mathematical Economics to Master's students at Solapur University, on March 10 and 15, 2017.
- Invited as a Visiting Scientist to the Economic Analysis Unit of Indian Statistical Institute, Bangalore, from August 1–12, 2016.
- Delivered two lectures on Political Economy of India at the Goa Institute of Management on June 16–17, 2016.
- Delivered a Lecture on 'Labour Force Data in India' for doctoral students at Indian Statistical Institute, Bangalore, on October 14, 2016.

Dr. Veeresh B. Hanchinal

- Presented a Paper on the 'Awareness and Use of Online Public Access Catalogue by Research Scholars: A Study with Reference to TISS Tuljapur Campus, at the 6th International Library &

Information Professionals Summit (ILIPS 2017) on 'Dynamics of Library for Excellence in Electronic Revolution' organised by IISER Mohali in association with Society for Library Professionals & Special Libraries Association (SLA) – Asian Chapter, April 6–8, 2017.

- Presented Paper on 'Librarian: An Essential Partner in Enhancing the Quality of Users' at the International Conference on Ownership to Access: Leveraging the Digital Paradigm, jointly organised by Ambedkar University, Delhi, Society for Library Professionals with Special Libraries Association (USA), Asian Chapter on May 19–20, 2016.
- Delivered a Guest Lecture on 'Citation Analysis and Plagiarism Check' in One-Day National Workshop "Strengthening Research Skills of College Students & Teachers", organised by Sangameshwar College, Solapur on November 10, 2016.

Dr. Sri Krishna Sudheer Patoju

- Keynote Address on 'Farmers' Issues in India and Norway: Possible Measures' at the Centre for Rural Research, Trondheim, Norway on April 7, 2016.
- Delivered Lectures on 'Farmers Support System in India and Norway' and "Innovative Projects, Entrepreneurship for Rural Youth in India and Norway' at Research Council of Norway (RCN), Oslo, Norway on April 10, 2016.

Dr. Roopesh Kaushik

- Delivered a series of lectures on 'Development and Natural Resource Economics' at the Central University of Rajasthan, Kishangarh, Rajasthan November 3–16, 2016.

Dr. Gunvant A. Birajdar

- Presented a Paper on 'A New Approach for Nonlinear Fractional Boundary Value Problems by Adomian Decomposition Method', at the International Conference on Recent Advances in Theoretical & Computational Partial Differential Equations, December 5–9, 2016, held at University Institute of Engineering and Technology, Panjab University, Chandigarh.



- Presented a Paper on 'Explicit Finite Difference Scheme for Newell-Whitehead Equation', at the National Conference on Recent Advances in Mathematics, held at K.S.K College, Beed, on January 21–23, 2017.
- Delivered a Talk at the State Level Seminar on 'Advance in Pure and Applied Mathematics' at the Arts, Science and Commerce College Saikheda, Niphad, Nashik, on January 7, 2017.
- Delivered a Lecture on 'Youth and Entrepreneurship' in the NSS camp of Dayanand Science College, Latur, on January 6, 2016.

- Delivered a Lecture on Calculus at the Sanjivani College Chapoli, Latur, on January 15, 2016.

Dr. Kalpana Dixit

- Presented Paper on 'Institutional Reforms and Democratic Governance: Systemic Change or Sabotage?', at the National Conference on 'The Question is Democracy' organised by the Centre for the Study of Developing Societies, Delhi, March 14–16, 2016.

Dr. Guntant Birajdar welcoming Dr. Deepak R. Sawant, Guardian Minister of Osmanabad District and Hon'ble Minister for Public Health and Family Welfare, Govt. of Maharashtra





5

M.A. and M.Phil. Research Dissertations

Research is an integral component of any teaching programme offered from the Campus. At the Bachelor's level, students are taught methods, different approaches and how to engage with research and write their dissertation projects. At the Master's level, students produce quality, evidence-based research through their dissertations. Master's students start preparing for their research work from the very first semester and complete their dissertation in the 4th semester.

At the M.Phil. and Ph.D. levels, there is rigorous and deep engagement with research issues, approaches and methods. The Campus generates a large number of research in different areas.

The major areas in which research at the M.Phil. and Master's levels were completed in the academic year 2016–17 at the Tuljapur Campus are enumerated in the subsequent paragraphs.

M.Phil. Dissertations

In May 2017, the second batch of M.Phil. students will pass out from the TISS Tuljapur Off Campus. A cursory glance at the M.Phil. dissertations submitted this year tells us much about the academic environment of the Campus. As expected, all the dissertations cater to the general theme of rural development. Yet, the selection of topics show a lively engagement with the diverse, but pressing issues that the field of rural development in India throws up.

All the dissertations, in some way or the other, show an awareness and concern for deep-rooted and long-standing problems of rural India. Marginalisation, agrarian crisis, poverty, educational backwardness, mobility, and environmental conservation are some of the issues upon which M.Phil. dissertations were focussed on in this academic year.

Of the 6 M.Phil. dissertations completed this academic year, 3 are concerned with specific marginalised

communities like tribals and Muslims. One of the dissertations looks into the issue of mobility among a tribe in Kerala and another one on the implementation of PESA in Maharashtra. The study on mobility of tribal women shows that it is not unidirectional and uniform and, in fact, the picture that emerges is much more complex. The study on the implementation of PESA shows that much remains to be achieved on the decentralisation of governance among tribals in India and in Maharashtra. The third one focuses on the issue of educational backwardness of Muslims in rural areas of West Bengal.

The Sachar Committee Report has highlighted the reality of huge development deficit of Muslims on almost all development indicators – health, income, education and employment. In the light of the findings of this Report, the dissertation topic is very timely and and shows that the gap between Muslims and other socio-religious groups in educational attainment in West Bengal has increased.

Two of the remaining three dissertations focus their attention on the economic aspects of marginalisation and empowerment. The dissertation on agrarian change and dynamics of rural transformation brings to the fore, the most significant challenge faced by India in general and rural areas in particular – agrarian crisis. Another dissertation revolves around the issue of empowerment of women through microfinance and microcredit, thus highlighting the need of bringing a gender angle into rural development.

Environmental conservation and wildlife protection in India has faced some serious challenges. Invariably, it has meant that the costs of conservation and protection are borne by the local, poor and marginalised communities. The dissertation focuses on this issue shows that the adverse effects of the conservation activity are on the relatively more marginalised groups among affected local populations.



Bachelor's students being oriented to research in a class

The well stocked library on Campus that helps students to research on contemporary rural issues



M.A./M.Sc. Dissertations

At the Master's level, students generally choose topics on the themes relevant to their programmes. In the academic year 2016–17, students in 4 Master's level programmes completed a total of 97 dissertations.

Dissertation areas of students in M.A. Social Work in Rural Development were related to the socio-economic status of different community groups, women and development, education, impact assessment of different schemes, social practices, Panchayati Raj, development projects, displacement, etc.

In the M.A./M.Sc. in Sustainable Livelihoods and Natural Resource Governance, the focus of research was on livelihood options and strategies of different community groups, natural resource management and role of communities, and impact assessment of natural resource conservation programmes.

The areas of research for M.A./M.Sc. in Development Policy, Planning, and Practice were the handloom sector, CSR, Panchayat Raj and women, wages in rural areas, Ganga Action Plan, sanitation and related policies, disabilities, etc.

In the M.A. Social Innovations and Entrepreneurship programme, the research areas covered were goat-rearing entrepreneurship, transgenderpreneurship, dairy farming, farmers producers companies, organic farming, marketing strategies by SHGs, women entrepreneurship, tourism and impacts on forests, CSR and entrepreneurship, etc.

The knowledge and data generated through these studies have been found useful by different stakeholders like NGOs, Govt. Departments, etc. For students, it helps in the development of critical thinking of selected issues. A panel of experts of faculty members selects the best dissertation from each of the programme and prizes are awarded to them.

M.Phil. Dissertation Topics

Research Scholar	Faculty Supervisor	Title of Dissertation
Biswabhusan Ghadai	Dr. Aparna Watve	Impact of Protected Area on the Lives and Livelihood of Local People: A Case Study of Bhitarkanika Conservation Area
Md. Musharuddin S.K.	Prof. Abdul Shaban	Intergenerational Education Mobility of Muslims of Rural West Bengal: A Study of Villages in Murshidabad District
Shakibai Sopan Kopare	Dr. Sampat Kale	The Role and of Provision of Panchayat's (Extension to the Scheduled Areas) (PESA) Act 1996 in Scheduled Tribe Development : A Case Study of Nandurbar District of Maharashtra State
Naveena Naik	Dr. Anjali Kulkarni	Study of Women Empowerment Through Shri Kshethra Dharmasathala Rural Development Project in Udupi District, Karnataka
Koustab Majumdar	Dr. Niladri Dhar	Agrarian Change and Dynamics of Rural Transformation in Contemporary India
Nisha Joseph	Dr. M. Kunhaman	Mobility Among Tribal Women: A Study of Mannan Community, Idukki District, Kerala

Master's Dissertation Topics

Topic	Student
M.A./M.Sc. in Sustainable Livelihood and Natural Resources Governance	
Resettling Livelihood: A Case Study of Baiga and Kharwar Tribal Communities	Alokita Jha
Livelihood Challenges and Practices of Pardhi Community: A Study of Tuljapur Block	Aloknath Sonwane
Impact Assessment of Ecotourism on Local Community of Nalsarowar Bird Sanctuary	Aniruddh Singh Jadeja
Livelihood and Diversification Strategy of Thakar Community In Junner Block	Avinash Arun
Understanding the Livelihood Strategy of Marginalised Kol Community & Role of Women	Bablu Kamta Prasad
Wasteland Management: A Comparative Study of Traditional and Modern, Wasteland Development Practice in Sihai Khullen Village Ukhurul Dist. Manipur	Chonreipam Raikhan
Link Between Knowledge, Attitudes and Practices Towards Pasturelands in Osmanabad District	Meenakshi Khandpal
An Analysis of Socio-Cultural and Economic Impacts of Nal Sarovar Eco Sensitive Zone on Livelihood Strategies of Padhar Community In Gujarat	Mithun Christy
A Study on Irrigation and its Paradoxical Role on Agriculture In Gujarat	Gaglani Nevil
Rehabilitation and Resettlement Policy and its Effect on the Livelihoods of the People: A Study of Village Fefariya Kalan in Madhya Pradesh	Rahul Pandagre
Economy of Organic Farming in Tuljapur Block	Rohit Deshmane
Understanding Sustainable Livelihoods: A Case Study of Chilka Lake, Odisha.	Sameer Pradhan
Impact of Jalyukt Shivar Abhiyan on Agriculture and Livelihood with Reference to Osmanabad Dist.	Somnath Gawali
Livelihood Strategy on Mahadev Koli Community in Junnar Block	Sudhir Ganpat Gawari
The Economic & Ecological Benefits of Grasslands Privately Conserved by the Mahadev Kolis in North Western Ghats	Surabhi Sheth
Well Being and Sustainability : A Study of Village at Dantewada Chattisgarh	Vaibhav Kant Sahu
Non-Timber Forest Products For Livelihood: A Case Study of Ukhurul Dist. Manipur	Yurngamphi Shangjam
Comparative Study on Community Development Programmes in Panna Tiger Reserve Madhya Pradesh	Namrata Tomar
Use of Natural Resources and Changing Trend of Livelihood of Kumbhar and Dhiwar Community	Ankita Tumsare
M.A. in Social Work in Rural Development	
Socio-Economic Condition of New Delhi Slum Dwellers: Slum Well Being Index	Aditya Jain
The Socio Economic Aspects of Scheduled Caste Women in Chamrupur Village, District Ambedkar Nagar, Uttar Pradesh	Amrita Saurabh
Socio Political Implications of Tribal Land Struggles in Kerala: A Case Study of Causes and Impacts of Muthanga Struggle in Wayanad	Anagha Mariya Jose
Impact of MGNREGA on Tribals of Giridih Jharkhand	Dinesh Kumar Yadav
Development Induced Displacement and its Impact on Farmers	Mahendrabhai Mohanbhai Chaudhari

Topic	Student
Theorizing the Tribal Dynamics in the Sociolinguistics Globalisation of Wayanad	Mujeeb Rahman
Livelihood Status of Musahar Community in Madhubani Dist. of Bihar	Mukesh Kumar Mandal
Unmasking Development: An Inquiry for Socio-Ecological and Vulnerability Assessment of Greenfield Airport Mopa, Goa	Nupur Jain
Burden of Marriage Expenditure on Rural Families	Prashant Ashok Chavhan
Dropout Rural Dalit Student From Higher Education	Sonwane priti Bharat
A Study on Socio-Economic Condition of Rural Dalit Women in Malshiray Block Maharashtra	Punam Subhash
Business Plan—A Construct and Reality: A Case Study of Krushi Parvatan Onion Farmer Producer Company, Tuljapur	Rajiv Ranjan Singh
Socio-Economic and Cultural Changes among the Gonds	Sagar Kumbhare
Tribals in Industrial City: Development and the Process of Marginalisation in Raurkela Steel City	Sarojini Oram
Class and Caste Dynamics of Women in Agriculture in Bihar	Shubha Srishi
A Study of Government Schools in the Villages of Uttarakhand and its Impact on Society	Silka SINGH
Urban and Rural Educated Youth: A Glimpse Into Continuity and Discontinuity	Ujjwal Kumar
Impact of Uranium Mining in Tribal Life, Livelihood and Environment: A Case Study of East Singhbhum, Jharkhand	Joba Hansdah
Education of Tribal Children in Jharkhand	Steffie Philomina Tirkey
Aspects of Transition of Tribes into Castes: A Study In Jharkhand	Ankita
Political Economy of Water in Maharashtra: A Case Study of Latur Dist.	Tanay Mohan
Girls Status of Education: A Case Study of Hosangabad Dist., M.P.	Chetan Chaudhary
Panchayati Raj Institutions and Fourteenth Finance Commission: Its Status & Impact	Ravi Ghule
The Attitude of Son Preference: A Study in Rural Area of Beed Dist., Maharashtra	Minal Yadav
Impact Evaluation of Cultural Ceremony on the Socio-Economic Life of the People in the Festive Vicinity: A Study of Kumbh Mela in the Ujjain Dist. M.P.	Monil
A Socio-Economic Study and Migration of Katkari Tribes in Jambhulpada Village of Raigad District	Rahul Sathe
Decentralisation in Non-Schedule Areas of North-East India: A Tribal Woman's Experience in Politics in Manipur	Th. Chingngaihsiam
Health Issues of Women and its Impact on Family Life: A Case Study of Hoshangabad District of Madhya Pradesh	Adarsh Rawat
Drought Impact on Farmers Livelihoods	Raviraj Fugare
Impact of Construction of Gose Khurd Dam on the Villages of Bhandara District	Mukesh Katekhaye
Issues and Challenges of Ashram Shala: Analysis of Such Schemes Among The Kark Tribes Of Melghat Region	Anuj Narwane



Topic	Student
Perspective of Farmers on Organic Farming and Chemical Farming: A Case Study of Latur Dist.	Javed Sayyed
Caste and Cultural Expressions: A Socio-Cultural Study of Theyyam	Layana Thallasserri
Study of Socio-Cultural and Political Dynamics of Rural Youth: With Reference to Lonar Block in Buldana Dist. of Maharashtra	Raju Atmaram kendre
M.A. in Social Innovation and Entrepreneurship	
Condition of Women Practices Followed and their Effects On Environment and Health	Aayushi Bhardwaj
Goat Rearing Entrepreneurship in Chhattisgarh and Maharashtra: Identifying its Opportunity and Feasibility	Abhishek Kumar
Factors for Success in Small and Medium Enterprises: A Study of Gaffar Market, New Delhi	Ankit Shaw
The Scope for Rehabilitation of Children in Conflict With Law	Asaram Dadarao Hatagale
Teachers Perspective of In-Service Training: A Study in Panchkula Dist., Haryana	Neha Gulati
Study of Current Marketing Trends of Product Based Self-Help Group: Study of Tuljapur Block in Marathwada Region, Maharashtra	Ravi Vasant Sakhare
Multi-Stakeholder Engaged Social Impact Measurement: A Study in the Health Care Sector	Riddhi Jhunjhunwala
Capacity Building and Marketing Challenges of Tur Dal Farmers: A Study in Osmanabad District	Sandhya Kujur
Rehabilitation of Children in Conflict With The Law: A Social Entrepreneurial Perspective	Sanish Kulkarni
The Impact of Entrepreneurship Education On Entrepreneurial Intention	Saumya Agarwal
Exploring Opportunities for Transgenderpreneurship: A Case of Salem District, Tamil Nadu	Syed Fazil Shariq. S
Role of Corporate Social Responsibility in Developing Entrepreneurship	Upasna Luthra
Study of Dairy Farming on the Socioeconomic Condition of Farmers in Osmanabad District	Vaibhav V. Suryawanshi
Assessing Effectiveness of Farmer Producer Companies of Osmanabad Taluka	Vineet Singh
Comparative Study on Organic and Non-Organic Paddy Cultivation for Reducing the Chemical Farming Without Harm to the Land in Raigarh Dist. Chattisgarh	Virendra Singh Kanwar
Study of Current Status of Farmers Producer Company in Osmanabad Dist.	Sunil Maruti Dhaware
Impact of Tourism in the Development of Tribal Area /Forest Area: A Study of Amritdhara Project in Koreya District in Chhattisgarh in India	Gameti Karansinh Kamjibhai
Women Entrepreneurship: Opportunities and Challenges (A Study in Dimapur District of Nagaland)	Vinotoli Yepthomi

Topic	Student
M.A./M.Sc. in Development Policy, Planning and Practice	
Impact of Information Education and Communication (IEC) Material on the Health Awareness of Kolam Tribe in Kinwat Block of Maharashtra	Anuja Joshi
Corporate Social Responsibility and Rural Governance: Case Study of Kizhakkambalam Panchayath, Kerala	Bonita Basumatari
Effects of Subsidy and Irrigation on Rice Cultivation: A Case Study of Udalguri District of Assam	Bonita Basumatari
Study on Product and Process Innovation, Marketing Techniques and Declining Workforce in a Traditional Industry: A Case Study of the Handloom Sector	Dwijja V.J.
Education and Baradari: Comparative Study of Ansari, Qureshi, and Saifi Baradari in Aligarh City	Guru Ratnam
The Development Conundrum: A Case Study Of Jhalda 2 Block, Purulia Dist. West Bengal	Kapil Pincha
Socio-Economic Study of Carpet Weavers in Bhadohi, Uttar Pradesh	Kaushal Singh
Problem of Leprosy among Tribes: A Study of Valod, Tapi Dist. Gujarat	Mayank Chaudhari
Livelihoods, Migration of Muslims and Development in Gaya District of Bihar	Zainul Abedin
Study on the Impact of Delhi Building and Other Construction Workers' Welfare Board and Trade Union Role in Achieving Social Security	Monica Shrivastav
A Study of the Problems and Challenges of Agricultural Labourers and Brick Kiln Workers in Muhammadabad and Bhawarkole Blocks of Ghazipur District: A Policy Perspective	Nusrat Ansari
Role of Gram Sabha in Village Development, Konhali Village Solapur District of Maharashtra	Siddharam G.
Land Distribution and Persisting Agony Of Dalits: Situational Analysis of Post Bodhgaya Math Movement and Adrifted Vision	Srishti kumari
Lavasa Urban Displacement: A Study of Socio-Economic Condition of Katkari Women	Vinit Chavan
The Contribution of Women Sarpanch in Village Development	Zunjar Bankar
Impacts of Livelihood Components of TSP on Bodo Tribes of Assam	Nabajit Daimary
Food Security for the Urban Poor Migrants	Vaibhav Bhagat
Wages in Rural India: With Reference To Minimum Wages	Aishwarya Mishra
Issues and Concerns of Widowed, Divorced and Separated Women in Marathwada, Maharashtra	Aishwarya Kadam
Impact of Neo-Liberal Policies on Livelihoods of Fishing Communities in Tamil Nadu	Janani Sathviga
Efficacy of Ganga Action Plan in Varanasi	Mayuri Mehrotra
Condition of Women Workers in Ceramic Refractories of West Bengal	Nalini Choubey
Department of International Development and the Forest Sector of India: A Case Study of Himachal Pradesh Forest Sector Reform Project	Sharvari Pande
Sexual Abuse Among Women With Disabilities	Parnika Madar
The Journey to Open Defecation: Free Piloting The CLTS Approach in Katri, Maharashtra	Prerana Krishnan
Status of Mentally Handicapped Children and Issues Faced by their Families: A Study in National Institute of Mentally Handicapped (NIMH) and Analysis through Mental Health Policy In Mumbai, Maharashtra	Somreeta Khan

6

Field Work and Experiential Learnings



Field work and experiential learning remain a core component of all teaching programmes offered from the TISS Tuljapur Off Campus. All the programmes have well developed frameworks for this and a group of faculty members monitor the learning process of students placed in field —rural areas, industries, civil society and government organisations. The students are expected to write a report on their learnings and present the same before a panel of examiners. This helps the teachers in assessing their learning processes and initiate action, wherever required, to make the learning more effective and enjoyable for the students.

Scheme and Design of the Field Work for Master's Programmes

The field work for all M.A./M.Sc. programmes is spread over three semesters and consists 15 to 28 credits as per the requirements of the programme. The sequencing of field work is designed with a view to enable the students to apply/practice knowledge and skills acquired in the classroom. It is organised in such a manner that there is smooth graded progression from one level to the next through systematic internalisation and upskilling. Students are placed for field work in groups of 5 or 6. As per the guidelines laid down in the Field Work Manual, there are three sites to facilitate learning for students.

- a) In the first semester, students are placed with Gram Panchayats, directly or indirectly through NGOs. At most of the places, students stay with the families in the villages and attempt to understand the communities, their structure, compositions and internal and inter-community dynamics. Students learn participatory methodology and Participatory Rural Appraisals (PRA). During 2016–17 and across the Master's programmes, students were placed in 18 villages of Maharashtra.
- b) In the second semester, field work placement of students is organised with Development Organisations. The objective of placing the students in such organisations is to enable them

to understand the intervention strategies through NGOs, peoples' organisations, organisations working for advocacy, and social entrepreneurial activities, etc. They are exposed to urban as well as rural planning exercise during this semester through field work or field immersion. During 2016–17, the students were placed in 26 development organisations all over the country, which had different nature of activities, ranging from livelihoods to entrepreneurship.

- c) In the third semester, field work is organised with government departments or with organisations implementing government programmes. The M.A./M.Sc.-DPPP students carried out evidence-based policy paper during their field work, while the M.A./M.Sc. SIE students did their pilot project to gain entrepreneurial skills. This year, the students were placed in 24 organisations, engaged in the implementation of government programmes across the country.

Pilot Project

The M.A./M.Sc. programme in Social Innovations and Entrepreneurship, encourages students to work on pilot entrepreneurial projects. Students often develop different pilot projects based on the needs and situation of the communities and their interests. In this academic year, the students completed 14 pilot projects on different aspects related to entrepreneurship.

Exposure/Orientation Visit of Students

A four-day exposure visit was organised for students of M.A. Social Work in Rural Development and M.A. Social Innovations and Entrepreneurship in the first semester. The purpose is to expose students to different development organisations and villages, which have done remarkable work in the development sector. Some of these organisations and villages included, Ralegaon Siddhi, Hiware Bazare, BAIF, Comprehensive Rural Health Project (CRHP), Jamkhed and Shantivan,

Panvel (Rehabilitation Centre for Leprosy Patients), Spice Manufacturing Unit, Mumbai, Sampuran(e) arth, Mumbai (waste management), CLIPS India, Community Networking Forum, Mumbai, and Apni Shala, Mumbai (skill development activities for school children), PRATHAM, Mumbai, etc.

Field Work for B.A. in Social Work with Specialisation in Rural Development (2014-2017)

The B.A. programme in Social Work (B.A.S.W.) is one of the important programmes offered by the TISS Tuljapur Campus. The aim of the programme is to build committed and competent facilitators and grassroots workers for participatory change and transformation in rural areas. The field work is organised at the level of individuals, groups and communities in government and non-government organisations. The field work is for 28 credits and are spread over five semesters.

The first level of field work start in the 2nd Semester of B.A.S.W. programme with the objectives of understanding village/communities. The students are exposed to panchayati raj Institutions, primary schools, rural health, drinking water and livelihood issues faced by the village communities. They also interact with the village women, particularly with the SHGs and also with other marginalised communities like Muslims and Dalits. The students are expected to prepare the village profile of the village. This academic year, the students were placed in two villages namely, Warwanti and Kamtha villages in Tuljapur Block.

The second level of field work is also done at the village level to reinforce the understanding of village/communities. The students are expected to understand different issues in the villages in detail and to develop social work skills in using tools and techniques, and to understand the administrative process at the village level for effective service delivery. They are taught to consciously apply professional social work values and principles in one's conduct. In the third semester, students were placed in 4 villages, namely, Teeth (Kh), Jawaga Mesai, Wadgaon Dev and Sindgaon villages in Tuljapur Block.

The third level of field work is done in the 4th Semester of the programme with the objective of understanding policies, programmes and projects of the agencies and also to understand their organisational structures.

The students are expected to understand the role of social workers and other professionals within the organisations. Students were placed with NGOs, namely Aaple Ghar, Naldurg, Observation Home, Childline, Shantabai Balgruh, Tuljapur and Tuljamata Balgruh, Tuljapur.

The fourth level of field work is done in the 5th semester of the programme with village communities to understand the issues at the village level and learn the intervention/implementation strategies of government programmes. The students are required to collect the data through PRA methods and use them for village planning exercises. The students are given the task to choose any one sector based on their interest. This academic year, the students were placed in five villages of Tuljapur Block namely, Teerth Bk, Wadgaon Lakh, Sangi Mardi, Khandal and Sarola.

The fifth level of field work is carried out in the 6th semester. The students are placed with a Development Organisations/NGO. They are expected to write the dissertation based on the primary data. This academic year, the students were placed in 12 different organisations namely, NT/DNT Centre, Aurangabad; Halo Medical Foundation, Andur, Taluka Tuljapur; SPM (Admin) RGAVP, Dept. of Rural Development and Panchayati Raj, Govt. of Rajasthan, Jaipur; Mahtama Phule Samaj Seva Mandal, Karmala, Dist. Solapur; MSRLM, Tuljapur Office, Dist. Osmanabad; Center for Education, Health, Research and Advocacy, Pune; and Municipal Council, Tuljapur Town.

Experiential Learning for BASS

The Integrated B.A.-M.A. programme in Social Science offers an opportunity for the students to learn from field by living with and interacting with communities. This academic year, the students of the programme were placed in six villages for 10 days, where they were expected to observe, experience, and reflect on the social settings of the villages. They studied political, social and religious Institutions, village economy, health and education of the people.

Field Work and Internship Placement Agencies

As mentioned above, field work and internship form an integral component of the course curriculum at the Bachelor's and Master's level programmes at the Campus.



For their field work and internships, the students were placed with various government and non-government agencies, and also community organisations.

In 2016-17, the students were placed in agencies based in Rajasthan, Orissa, Jharkhand, Chhattisgarh, Maharashtra, Andhra Pradesh, Uttar Pradesh, Bihar, Uttarakhand, Gujarat, Tamil Nadu, Kerala, Karnataka, West Bengal, and some of the North-Eastern States of India (Manipur, Nagaland, Assam).

Most of the students, for their field work and internship, focused on themes like rural livelihoods, forestry, water resources, human rights, entrepreneurship, delivery of social protection programmes, decentralised governance including performance of Panchayats, etc. The field work and Internship learning also help in their overall learning process and formulating their research dissertations.

Semester wise Field Work Agencies for M.A./M.Sc. programmes

Semester/ Field Work Area	Programmes			
	M.A. Social Work in Rural Development	M.A./M.Sc. in Development Policy, Planning and Practice	M.A. in Social Innovation And Entrepreneurship	M.A./M.Sc. In Sustainable Livelihoods and Natural Resources Governance
Semester 1 Field work with village Community	Torabma, Jawalga Mesai, Wadgaon Dev, Chincholi, Devsinga, Ambeoval	Society for Change, Nagpur; Center for People's Collective, Nagpur; Vidarbha Van Adhikar Sangathan, Chandrapur	Bembli, Naldurg, Tamalwadi (Apnishala, Clips India, Sampurn Earth, Pote Masala, Shantivan), Prathamfor field work exposure	Baripada, Dhule District; Medha Javali, Satara; Lonarwadi, District Nasik; Sangamner, Dist: Ahmednagar
Semester 2 Field work with Development Organisations	Majdoor Kisan Shakti Sangthan, Samarpan, National Alliances for Peoples' Movements (NAPM), Bharat Calling, Dalit Sangh (MP)	Delhi Shramik Sangathan, New Delhi; Right to Food Campaign, Jharkhand; St. Xavier's Social Service Society, Gujarat; Shelter Associates, Pune	Maharashtra Center for Entrepreneurship Development, Sampurn(E)arth Environment Solution Pvt. Ltd., Bhagirath Gram Vikas Pratisthan, SATH, Greensole, Eco Green Unit, Coimbatore; Apni Shala, Secmol, Helpage India, Katraj Dairy, Center for Bee Development, Wardha, Center for Environment Science	BAIF, Development Research Foundation, Madhya Pradesh; Samarthan- Centre for Development Support, MP; AFARM, Pune; Astha Sansthan, Rajasthan

Semester/ Field Work Area	Programmes			
	M.A. Social Work in Rural Development	M.A./M.Sc. in Development Policy, Planning and Practice	M.A. in Social Innovation And Entrepreneurship	M.A./M.Sc. In Sustainable Livelihoods and Natural Resources Governance
Semester 3 Filed Work with Government Agencies/ Departments	FW with Advisor to Supreme Court on PDF for Orissa State, Kudumbashree, UDWDP-II (GRAMYA), Uttarakhand, Lokdrishti Orissa, District Collectorate, Dantewada, CEO HPSRLM, Himachal Pradesh	Different Agencies identified by the students to work on the evidence based policy paper across the country.	Third semester students had taken totally 14 pilot projects on different topics.	CEO HPSRLM, Shimla; Odisha Rurban Mission, Bhubaneshwar; Madhya Pradesh, MoEF; Chhattisgarh Livelihood Mission; Kudumbashree, Kerala.

Fieldwork and Internship Agencies

Programme	Field Work		Internship	
	Agencies	Students Pplaced	Agencies	Students Placed
B.A.S.S.-III	NA	NA	45	61
B.A.S.W.-I	10	27	-	-
B.A.S.W.-II	11	35	-	-
B.A.S.W.-III	7	17	-	-
M.A. DPPP	22	52	20	25
M.A.S.L.N.G.	10	20	19	19
M.A.S.W.-RD	14	34	34	34
M.A.S.I.E.	15	36	-	18
PG.D.W.A.S.H.	8	21	8	21

7

Student Driven Academic, Cultural and Other Activities

Students of the Tuljapur Campus regularly organise lectures, talks, literary events, and cultural and sport activities. They also engage in cleanliness drives, environmental improvement and conservation programmes, and in spreading social awareness. The student-led events for 2016–17 were:

Colloquium

Weekly colloquiums of students and faculty members are held on Campus. This year, some of the topics of the colloquium were 'Higher Education in the Context of Development', 'Globalisation and Regional Development of India', 'Filming as Ethnographic Method in Migration Studies' and 'Reclaiming Emotions Using (self) Reflexivity as an Insightful Method for Ethnographic Research'.

Memorial Lectures

The **Birsa Munda Memorial Lecture** was delivered by Prof. Virginius Xaxa on December 19, 2016, on 'Political Economy of Resources and Development in India'. The **Dr. Ambedkar Memorial Lecture** (AML) is another event at the Campus, which attracts a large number of students and teachers from the district. The 8th AML was held on February 25 and 26, 2017 as a lecture series on the theme of 'Relevance of Dr. Ambedkar's Thoughts and Policies in Contemporary India'.

On this occasion, Prof. Hari Narke delivered a lecture on 'Dr. B.R. Ambedkar's Vision for Farmers, Family Planning and Development of the Nation', Dr. Razia Patel talked on 'Thoughts on Uniform Civil code (UCC) and Muslim Women in India' and Mr. Kapil Patil delivered his lecture on 'Issues and Challenges in Higher Education in India'.

At TISS Tuljapur Campus, Education Day was celebrated by students on January 3, 2017. On this occasion, Mr. Anand Karandikar delivered a lecture on the 'Impediments to the Growth of Science and Technology in India' and Ms. Sarita spoke on 'Life and Struggle of Savitribai Phule and her Contribution to Education in India'.

National Rural Youth Festival

The Campus celebrated the 9th National Rural Youth Festival (NRYF) from January 3–5, 2017, with support from UNICEF, Tata Motors, Fiat, Axis Bank, Nabard, SBI, etc.

The theme of the festival was "Gram Darpan" and a number of events were organised by the students.

- Spandan, a campaign to create social awareness about health, education, hygiene, sanitation and women empowerment, etc.
- Tour D Apsingabad, to mobilise villagers and to have a peek into their lives.
- Nirakaran, an opportunity to identify avenues for the development of rural areas.
- Sarpanch Nayak, a platform to comprehend village administration by acting as the Sarpanch of a village for a day.

In addition, sporting events like Table Tennis, Badminton, Basketball, Football, Kabbadi, Kho Kho, Cricket, Volleyball, Chess and Marathon were also organised during the NRYF. A number of cultural and literary events were also organised.

The students of TISS Tuljapur have been undertaking various innovative projects for promoting socially just development in the region/country. They have created platforms for weekly debates on important developmental issues. Some other student-run activities on Campus are:

Samvad: This is an open house platform for social dialogue that students organise every Friday evening. Samvad is a discourse/debate on a current social issue/topic in the evening to promote critical thinking, analysis, sensitivity and appreciate alternative perspectives. Faculty members also participate and contribute to this.

Samadhan: It is an idea generation platform for rural development by the rural youth. Entirely run by the

students of TISS Tuljapur, it tries to provide a platform to nurture their ideas and make them influential leaders of tomorrow. Currently, this initiative is being run in 8 villages of Osmanabad district and depending on the learning, it will be replicated at regional and national levels.

Skip-a-meal: A group of students on Campus has been diligently working towards motivating other students to Skip-a-Meal every week for the orphan children. Currently, on an average, around 100–150 students skip their meals every Saturday and 20 regular volunteers take the food to the children at Tuljapur town and other locations. The students also provide pens, pencils and books to needy children.

Mushaira: At the TISS Tuljapur Off Campus, students believe that some words are born in heart and best

understood by hearts. To celebrate the language of heart, these students started a poetry recital event called Mushaira in 2013. Carrying forward this tradition, Mushaira is now an annual event at TISS Tuljapur and is organised in the month of December every year. The theme for Mushaira is matched with the shayari of pre-eminent Urdu/Hindi/Marathi poets. In between the recitals, the students walk the audience through major works and lives of great poets in South Asia.

The students of the Campus also participate in various national and international level events, and this year they participated in Global Action Poverty (GAP) programme at Sabarmati, Ahmedabad, organised by Gandhi Ashram, IRMA, ICSW, AISEC and Tata Trust.

Health Camp organised by TISS Tuljapur students at Arli Village during NRYF 2017



8

Social Protection and Financial Aid

The Institute has several committees as per the GoI/UGC Guidelines and has also created its own committees/offices to protect the interest of students at large and specifically those from the marginalised sections of the society. Some of these committees/offices are Committee Against Sexual Harassment (CASH), Social Protection Office, Anti-Ragging Committee, Grievance Redressal Committee, etc.

The TISS Tuljapur Off Campus also provides financial aid to needy students from various endowments to enable them to complete their education without any interruption.

Social Protection Office

India is a country of social, cultural and racial diversity. This diversity provides us our strength, and also creates vulnerabilities for marginalised groups and minorities. The Social Protection Office (SPO) was established to safeguard the interests of the marginalised groups and assist them to avail government schemes like scholarships.

TISS Tuljapur Campus has a well-functioning SPO and it coordinates its various activities with the Dean (SPO) at TISS Mumbai. The Office also works towards creating a conducive environment on campus and motivate students for higher studies, work with communities, and undertake research on contemporary issues of the marginalised sections of the society.

The SPO at TISS Tuljapur has been organising pre-admission orientation programmes for SC, ST, OBC, PWD and minority community students. The Office also organises post admission orientation, capacity building, training and networking programmes for students belonging to these marginalised and vulnerable groups. Wherever possible, the SPO facilitates financial support to students belonging to SC and ST communities to meet their expenses during field work.

Committee against Sexual Harassment

At the Institute level, the Gender Amity Committee (GAC) of TISS works towards ensuring sensitisation and awareness amongst all members of the TISS community regarding gender inequality and sexual harassment. The TISS Tuljapur Campus has established its Committee against Sexual Harassment (CASH) and this Committee actively takes up all the internal complaints and issues as per the Sexual Harassment of Women (Prevention, Prohibition and Redressal) at Workplace Act, 2013 based on written complaints submitted by aggrieved women/girl students. The Committee also ensures overall support for persons with sexual and gender non-normative behaviour and expressions as per the UGC guidelines of 2015.

Financial Aid

The TISS Tuljapur Off-Campus started an innovative financial support programme, way back in the year 2004, for its needy students to pursue their education at the Campus without any interruption. Along with ICICI Bank and the Doshi Vakeel endowments, TISS Tuljapur assists needy students with financial aid.

Though financial assistance is open to all students undertaking academic programmes at TISS Tuljapur, preference is given to those who are not receiving any support from other sources. A Financial Aid Committee is appointed to select deserving students based on a set of criteria to award the available financial aids.

In the academic year 2016–17, 42 students applied for financial aid. The Committee tried to reach out to most of the deserving candidates. However, after taking up a thorough process of scrutiny, the Committee provided support to 36 students. Out of these 36 students, 25 students received scholarship or financial aid from the ICICI endowment and 11 students from the Doshi Vakeel endowment.

TISS Tuljapur Campus students also received financial aids from Fazlani Aishabai & Haji Abdul Latif Charitable Trust, Mumbai, with seven students supported by the Trust.



9

Collaborative Faculty and Student Exchange Programmes

The TISS Tuljapur Off Campus attracts a large number of students and faculty from across the globe for collaborative research projects, student exchange programmes, workshops, and field internships. The Campus also receives a large number of visitors who seek to promote and establish academic exchange programmes. The Campus also invites prominent intellectuals/scholars from various universities/academic institutions and organisations within and outside the country as honorary adjunct professors/faculty to contribute to its teaching, learning and research activities.

Adjunct Faculty, Collaborative Projects and Exchange Programmes

In the academic year 2016-17, TISS Tuljapur Campus appointed three honorary adjunct faculty who have acquired eminence in their respective fields: Prof. Philippe Cadene, Head, Department of Geography, University of Paris, France; Mr. Satish Pradhan, Retd. Chief of Group Human Resources, Tata Sons; and Dr. Prashant Narnaware, IAS.

Prof. Philippe Cadene visited the Campus during December 2016 and delivered lectures on 'Spatial Economy and Development in India'. Mr. Satish Pradhan has been an important advisor to the students of M.A. in Social Innovations and Entrepreneurship at the Campus, while Dr. Narnaware has been a motivating factor for understanding the current changes in rural society and economy, and policy response.

Invited and Visiting Faculty

Prof. Filip Vermeylen, Erasmus School of History, Culture and Communication, Erasmus University, Rotterdam, the Netherlands, visited Tuljapur Campus in October-November 2017 under the ICSSR-NWO (Netherlands) awarded bilateral research project with Prof. Abdul Shaban on 'Creative Industries in India: Size, Geography and Potential'.

Ms. Annika Straus, Faculty at the Department of Ethnology, Munster University, Germany, visited the Campus between November 2016 to March 2017 and delivered lectures on various topics, including auto-ethnography. From TISS Tuljapur Off Campus, she also offered an online tutorial on 'auto-ethnography' to students of TISS Tuljapur Campus and Munster University.

Dr. Anne Margrethe Brigham and Ms. Brit Logestein from the Centre for Rural Research (CRR), Trondheim, Norway visited TISS Tuljapur Campus from between March 20–25, 2017, for a discussion on developing Farmers' Stress Index (FSI) with the faculty members. In addition, discussions were also held for collaborative research work on Mental Health in Rural Areas, Rural Livelihoods and Agricultural Value Chain Analysis.

Dr. Zulmir Becevic and Dr. Magnus Nilsson from Gothenburg University, Sweden, visited the Campus under the faculty exchange programme during August 30 to September 2, 2016.

Prof. Mark Lindeley from the University of Zaragoza delivered a lecture on Ecological Approaches to Sustainable Development on December 22, 2016.

The Campus has also been hosting lectures of various eminent professors and scholars. Prof. Gopal Guru (JNU, New Delhi); Prof. R.B. Bhagat (IIPS, Mumbai); Prof. Amar Naik (XIM Bhubaneswar); Prof. Binayak Chaudhri (SPA, Bhopal); Prof. Jitendra Shah (IIT Bombay); Prof. Suresh Pathare (Director, CSRD, Aurangabad), and many others prominent professors visited the Campus and delivered lectures.

International Visits by TISS Tuljapur Faculty

Prof. Abdul Shaban and Dr. Anjali Kulkarni visited Kabul University in February-March 2017 to deliver lectures and support the faculty members of the Department of Social Work, Kabul University, in research and extension activities.



Prof. Philippe Cadene (L) and Prof. Abdul Shaban working on a joint research study



Dr. Prashant Narnaware, IAS, delivering a lecture on rural development



Mr. Satish Pradhan delivering a lecture

Prof. Abdul Shaban was invited by the Department of Ethnology, University of Munster, Germany as a Visiting Professor to teach courses at the Master's and Bachelor's levels and deliver public lectures during April-June 2017. He taught two courses and delivered two public lectures during his stay there.

Prof. Abdul Shaban was invited as Visiting Professor by the Department of Geography, Paris University Diderot from April 23 to May 7, 2017. He delivered several lectures to students on urban and regional development and a public lecture on 'Farmers' Entrepreneurship and Institutional Actions in Neoliberal Market: A Case of Osmanabad'.

Dr. Veeresh Hanchinal, Deputy Librarian, visited the University of Mannheim, Germany, during March 17–31, 2017, under the staff exchange programme.

Student Exchange Programmes

The International Relations Office (IRO) located at TISS Mumbai centrally coordinates all international exchange programmes of students. TISS Tuljapur Off Campus has a sub-office of the IRO and faculty members coordinate the programmes between TISS Tuljapur and IRO in Mumbai Campus. All applications received for the advertised student exchange programmes are coordinated at the Campus from this sub-office. The student exchange programmes at TISS are unique in

the sense that the students generally do not bear any financial costs. TISS has worked out MoUs with the International Universities in such a way that all the costs of visiting students from TISS are taken care of by the universities. Besides promoting semester exchange programmes for students, the IRO also provides financial assistance to students for attending conferences, seminar and workshops in other countries.

The TISS Tuljapur Off Campus actively promotes exchange of students between various universities outside the country. In this academic year, Ms. Joanna Kaiser from University of Applied Sciences, Darmstadt, Germany; Dr. Magnus Nilsson and Dr. Zulmir Becevic from University of Gothenburg, Sweden; and Ms. Annika Strauss, from Westfälische Wilhelms-Institut für Ethnologie, Muenster University, Germany, visited the Tuljapur campus.

Ms. Soumyashree Sen (Integrated B.A.-M.A. in Social Sciences) was selected as the exchange student from TISS Tuljapur under the Global U-Grad Exchange Programme, fully funded by the Department of State, U.S.A; while Mr. Guru Ratnam was selected for student exchange programme with Sciences Po, Paris. Ms. Utkarsha Patil (Integrated B.A.-M.A. in Social Sciences) attended a workshop at Mahasarkham University, Thailand, in November 2016 under a student exchange programme.



10

Campus Infrastructure Development

Spread over 100 acres of land, the TISS Tuljapur Campus is known for its eco-friendly environment and development. The Institute has attempted to protect and enhance the greenery and tree cover in the Campus. It has well developed housing, hostels, 24-hour electricity supply, high-speed internet connection, water supply and other amenities for its faculty, staff and students. The Campus is located about 3 kilometres to the west of Tuljapur town and is well connected with all weather road. There is a bus service between the Campus and Tuljapur town to ease travel of students and staff.

At present, there are 5 hostel buildings which can accommodate about 550 students. The construction of one wing of a new hostel is in progress and will be completed in next three months. Expansion of the Dining Hall is also under progress.

The Campus has taken adequate steps for rainwater harvesting and recycling. It has 4 underground waste water tanks and 4 rainwater tanks, each having 40,000 litres capacity, at different locations where the waste water and rainwater are collected. This water is used for gardening and plantation. A number of check dams and percolation and recharge wells have also been developed in the Campus, which help in conserving water and maintaining regular supply for the Campus needs.

To generate energy from wastes, the Campus has also established a Bio Gas Plant of 15 cubic meter

(2000 litre of pre-digester tank) capacity with help of Appropriate Rural Technology Institute (ARTI), Satara.

The Campus also has well equipped dispensary run by a doctor and 2 nurses. An ambulance is available for any emergency at the Campus, with super-speciality hospitals at Osmanabad and Solapur towns located within 45 minutes reach.

The Campus also has a well-equipped guesthouse of about 70 person. The guesthouse serves and caters to the need of parents and relatives of students visiting the Campus, and also visiting scholars, participants of conferences, seminars, workshops and training programmes.

The Campus has 4 dedicated conference halls for seminars, conferences and training programmes and 2 well-equipped computer and GIS labs of about 200 students' capacity.

The Campus has 1500 seater amphitheatre for students' cultural activities and other related activities. The amphitheatre is centrally located and surrounded by trees from all sides.

The Campus also has well-developed football ground, cricket pitch, badminton courts, volleyball grounds and basketball grounds.

The Campus has well-equipped gymnasium with trainer. Sport events are regularly organised by students at the campus with the team from nearby towns and villages.



The Green TISS Tuljapur Off Campus

Guest House at the Tuljapur Off Campus





11

Student Placements

TISS Tuljapur campus considers placement as a key complementary outcome of education and learning processes of the students. The core ideas are not only to place students in different organisations as good human resources, but also as change makers. Students are trained to take up assignments in the form of jobs as a socio-political commitment. Most of our students, accordingly, are interested to be placed in rural grass-root organisations, focusing on improving the outreach of primary education and health, livelihoods for resource poor rural communities and sectors related to water, agriculture, forestry and micro enterprises.

Career Guidance and Placement Cell

Placement of the students at TISS Tuljapur Off Campus is student led and appropriately assisted by a faculty coordinator. On their own students have designed and created a Placement Cell (a convenient administrative and facilitation platform) called CGPC, which works as an administrative and facilitation unit for placement on behalf of all students. The CGPC addresses the professional growth of students in terms of,

- Identifying the core interest areas of all the students for placement;
- Mapping and assessing the existing level of skills of students as well as that required by potential recruiters;
- Organising appropriate lectures and training programmes for the students to improve skills, as and where required; and

- Reaching out to various organisations, institutions, mission offices, consultancy bodies, and other private and corporate (CSR +) organisations to recruit students:

Organisational Structure of CGPC and Function

Although, the students' representatives of the Master's and PG Diploma Programmes run the CGPC, they get support from the faculty and administration. The Institute also has a Central Placement Committee (CPC) located at Mumbai Campus, which coordinates the placement of graduating Master's students of all the four campuses.

The placement of TISS Tuljapur operates and integrates within a central placement structure of the TISS Mumbai campus. The dual approach adopted by TISS and the TISS Tuljapur intends to provide a win-win situation for the students. While the TISS Tuljapur Campus maintains its ongoing placement initiatives with the development organisations showing their affiliations and liking towards the students of TISS Tuljapur, the TISS, Mumbai campus provides opportunities to Tuljapur campus students desiring to participate in some organisations of different orientation and scope. Such organisations may belong to micro finance, CSR and other government mission mode offices operating in various states and private organisations. The integrative and dual approach has always enhanced the scope of placement of our students.

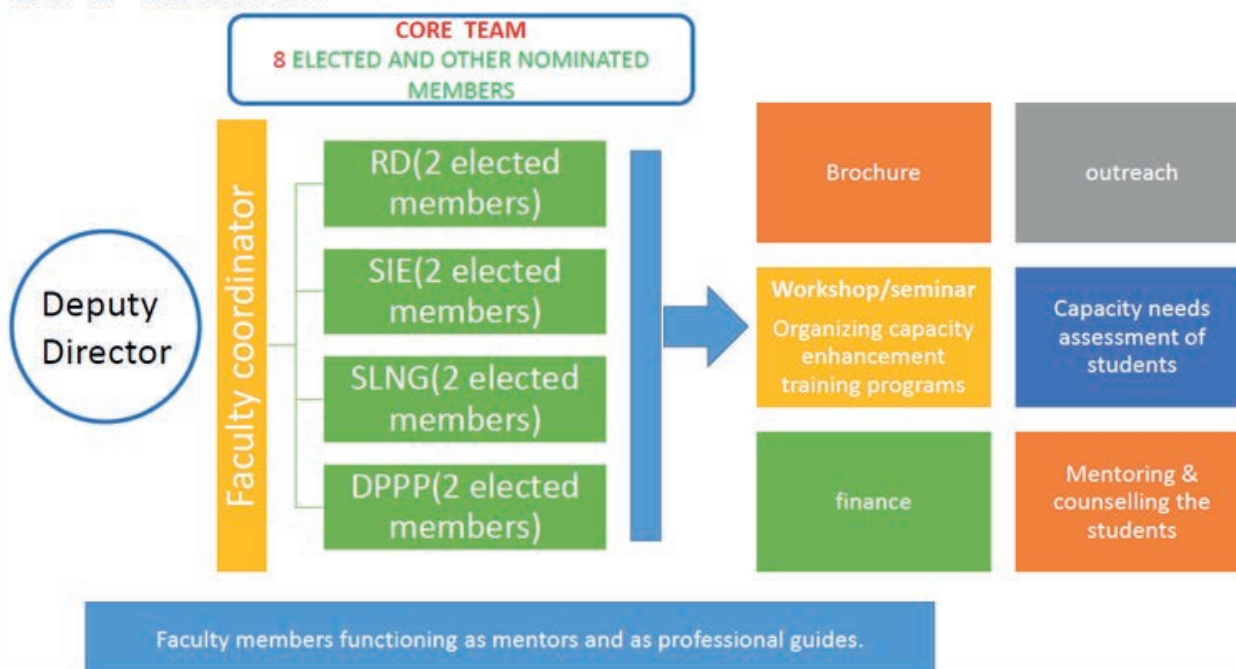
Placement Details of Master’s Programmes

Total No. of Students	No. of Students Registered for CGPC	No. of students not interested in placement	No. of Students Placed	Students not placed till date	Percentage of Students Placed
96	84	12	83	1	99%

Placement of students of PGD-WASH Programme from 2013-14 to 2016-2017

Batch	No. of Students	No. of Students Placed	Placement (%)	Remark
2013–14	18	18	100%	--
2014–15	16	12	92.3%	3 students opted for studies abroad
2015–16	15	15	100%	--
2016–17	21	20	99%	One student opted for higher education

CGPC structure





12

Student Enrolment

Total number of students at TISS Tuljapur (as on 31 March 2017)

Sr. No.	Programme	Students on Roll
1	B.A. in Social Sciences	116
2	B.A. Social Work in Rural Development	77
3	M.A. Social Work in Rural Development	68
4	M.A./M.Sc. Development Policy, Planning and Practice	46
5	M.A./M.Sc. in Sustainable Livelihoods and Natural Resources Governance	39
6	M.A. in Social Innovations Entrepreneurship	36
7	Integrated M.Phil.-Ph.D. Programme in Rural Development	17
8	Direct Ph.D. Programme in Rural Development	17
9	PG Diploma in WASH	21
Total		437

Number of Students Graduating in May 2017

Programme	Students
B.A. in Social Sciences	62
B.A. Social Work in Rural Development	17
M.A. Social Work in Rural Development	33
M.A./M.Sc. Development Policy, Planning and Practice	25
M.A./M.Sc. in Sustainable Livelihoods and Natural Resources Governance	18
M.A. in Social Innovations Entrepreneurship	18
Integrated M.Phil.-Ph.D. Programme in Rural Development	6
Direct Ph.D. Programme in Rural Development	-
P.G. Diploma in WASH	21
Total	200



13

Eleventh Convocation

Candidates for the 11th Convocation on May 19, 2017

Master of Philosophy

Biswabhusan Ghadai	Musharuddin S.K.	Koustab Majumdar
Naveena Naik	Nisha Joseph	Shakibai Sopan Kopare

M.A. Social Work in Rural Development

Aditya Jain	Amrita Saurabh	Anagha Mariya Jose
Dinesh Kumar Yadav	Chaudhari Mahendrabhai Mohanbhai	Mujeeb Rahman M.
Mukesh Kumar Mandal	Nupur Jain	Chavhan Prashant Ashok
Sonawane Priti Bharat	Dhobale Punam Subhash	Rajiv Ranjan Singh
Kumbhare Sagar Shankar	Sarojini Oram	Shubha Srishti
Silka Singh	Ujjwal Kumar	Joba Hansdah
Steffie Philomina Tirkey	Ankita	Balgarkashi Tanay Mohan
Chetan Choudhary	Minal Shivaji Yadav	Monil Chaurasia
Sathe Rahul Bhausahab	Th. Chingngaihsiam	Adarsh Rawat
Fugare Raviraj Jalindar	Katekhaye Mukesh Rambhau	Narwane Anuj Chandrakant
Sayyad Javed Gulab	T. Layana	Kendre Raju Atmaram

M.A./M.Sc. in Sustainable Livelihoods and Natural Resources Governance

Alokita Jha	Sonwane Aloknath Babruvahan	Jadeja Aniruddhsinh Bhupendrasinh
Khilare Avinash Arun	Bablu	Chonreipam Raikhan
Kandpal Minakshi Shekhar	Christy Mithun Sugathan	Gaglani Nevil Gopalkrishna
Rahul Pandagre	Deshmane Rohit Prasad	Sameerkanta Pradhan
Gawali Somnath Ananda	Sheth Surabhi Bipin	S. Vaibhavkant Sahu
Yurngamphi Shangjam	Namrata Tomar	Tumsare Ankita Prabhakar



B.A. in Social Sciences (Five Year Integrated B.A.–M.A. Programme)

Abira Barman	Ahsaas Verma	Aishwarya Rajesh Bhuta
Anoushka Kumar	Arnabranjan Mohapatra	Atishi Mishra
Chinmayi S. Anand	Deepak Kumar	Deepmala Tiwari
Drashti Manubhai Priyadarshi	Durgesh Kumar	Fateh Veer Singh Guram
Gayathri Nair	Gomathy V.	G. Thang Muan Lal
Harshada Bhaskar Ohol	Ilibo M. Zhimomi	Jayasankar Jayaraj Thayyil
Kumkum Pandey	Maddi Ashitha Sreelekha	Mukesh Kumar
Nehal Ranjan	Pankaj Kumar Godara	Pradnya Bharat Bansode
Prashant P. Prakash	Prerana Krantikumar Shilwant	Qheboka A. Sumi
Ramkishan Vishnoi	Rasika Meena Kaushik	Ria Debasish Dutta
Richa Tewari	Rishabh Jha	Rituparna Dey
Robert Hangsuantung Mate	Sandeep Sumanta Dash	Satyam Singh
Shana Salim	Shruti M. Nair	Shuroma Sarna
Simran	Sumit Poonia	T. Mary Nemneichong
T. Chongboi Singson	Thomas Paul	Tushara Ravindranath
Umeskumar Bhikaji Waghchaure	Undrajarapu Satya Bhanu Prasad	Utkarsha Samadhan Patil
Varun Namineni	Vinay Chand	Vineet narasimham Karlapalem
Vivek Namdev	Yamini Nibhanupudi	Yash Goswami
Zam Muan Thang	Sashika Bomi Patell	Abhilash Raju Durgkar
Harshit Pandey	Sankalp Sharma	Shalini S.
L. Ngaihte	Harshad Bansode	

B.A. (Hons.) in Social Work with Specialisation in Rural Development

L. Paominson Khongsai	Lentinler Chongloi	Suman Oraon
Pau Samuel Gangte	Subra Chakma	D. Jangkhomang Haokip
Hansika Ringe	Anjali Bandu Waghmare	Bodhi Ratan Chakma
Manu Singh	Akash Baban Kale	Shubhangi Sharma

Gladys Nougaihmawi Baite	Anuradha Chakma	Drashti Ajay Wani
Ashwini Ramchandra Pandhare	Kunal Munjal	

M.A in Social Innovations and Entrepreneurship

Aayushi Bhardwaj	Abhishek Kumar	Ankit Shaw
Hatagale Asaram Dadarao	Neha Gulati	Sakhare Ravi Vasant
Riddhi Jhunjhunwala	Sandhya Kujur	Kulkarni Sanish Shirish
Saumya Agarwal	Syed Fazil Shariq S.	Upasna Luthra
Suryawanshi Vaibhav Vijaykumar	Vineet Singh	Virendra Singh Kanwar
Dhaware Sunil Maruti	Karansinh Kamjibhai Gameti	Vinotoli S. Yeptthomi

M.A./M.Sc in Development Policy, Planning and Practice

Joshi Anuja Sadashivrao	Arjun Prasad	Bonita Basumatari
Dwija V.J.	Guru Ratnam	Kapil Pincha
Kaushal Singh	Chaudhari Mayankkumar Ranjitbhai	Md. Zainul Abedin
Monica Shrivastav	Nusrat Ansari	Gaikwad Siddharam Buddhappa
Srishti Kumari	Chavan Vinit Ravindra	Bankar Zunjar Rajendra
Nabajit Daimary	Bhagat Vaibhav Vasant	Aiswarya Mishra
Aishwarya Anant Kadam	Janani Sathviga V.S.	Mayuri Mehrotra
Nalini Choubey	Pande Sharvari Shankar	Parnika Madar
Prerana Krishnan	Somreeta Khan	



Academic Prize/Shield/Medal Winners

Institute Gold Medal to the Best Student in Master of Arts in Social Work in Rural Development	Nupur Jain
Institute Silver Medal to the Second Best Student in Master of Arts in Social Work in Rural Development	Shubha Srishti
Prize and Shield to the Best Student in Field Work in Master of Arts in Social Work in Rural Development	Nupur Jain
Prize to the Best Research Project in Master of Arts in Social Work in Rural Development	Nupur Jain
Institute Gold Medal to the Best Student in Master of Arts/Science in Sustainable Livelihoods and Natural Resources Governance	Alokita Jha
Institute Silver Medal to the Second Best Student in Master of Arts/Science in Sustainable Livelihoods and Natural Resources Governance	Namrata Tomar
Prize and Shield to the Best Student in Field Work in Master of Arts/Science in Sustainable Livelihoods and Natural Resources Governance	Alokita Jha
Prize to the Best Research Project in Master of Arts/Science in Sustainable Livelihoods and Natural Resources Governance	Surabhi Sheth
Institute Gold Medal to the Best Student in Master of Arts/Science in Development Policy, Planning and Practice	Monica Shrivastav
Institute Silver Medal to the Second Best Student in Master of Arts/Science in Development Policy, Planning and Practice	Nusrat Ansari
Prize and Shield to the Best Student in Field Work in Master of Arts/Science in Development Policy, Planning and Practice	Nusrat Ansari
Prize to the Best Research Project in Master of Arts/Science in Development Policy, Planning and Practice	Nusrat Ansari
Institute Gold Medal to the Best Student in Master of Arts in Social Innovation and Entrepreneurship	Sanish Kulkarni
Institute Silver Medal to the Second Best Student in Master of Arts in Social Innovation and Entrepreneurship	Riddhi Jhunjunwala

Prize and Shield to the Best Student in Field Work in Master of Arts in Social Innovation and Entrepreneurship	Sanish Kulkarni
Prize to the Best Research Project in Master of Arts in Social Innovation and Entrepreneurship	Riddhi Jhunjunwala
Ms. Dosi Vakeel Gold Medal for the Best Student in Bachelor of Arts (Hons.) in Social Work (Rural Development)	Drashti Ajay Wani
Ms. Dosi Vakeel Silver Medal for the Second Best Student in Bachelor of Arts (Hons.) in Social Work in Rural Development	Hansika Ringe
Ms. Dosi Vakeel Bronze Medal for the Third Best Student in Bachelor of Arts (Hons.) in Social Work (Rural Development)	Gladys Nougaihawmawi Baite
Institute Gold Medal for the Best Student in Bachelor of Arts in Social Sciences	Aishwarya Rajesh Bhuta
Institute Silver Medal for the Second Best Student in Bachelor of Arts in Social Sciences	Shuroma Sarna
Institute Bronze Medal for the Third Best Student in Bachelor of Arts in Social Sciences	Shana Salim

Administration and Faculty Members

Chairman of Governing Board

Mr. S. Ramadorai

Director

Prof. S. Parasuraman

Registrar

Dr. C.P. Mohan Kumar

Deputy Director: Prof. Abdul Shaban

Prof. M. Kunhaman

Dr. Babasaheb Kazi

Dr. Ramesh Jare

Mr. Rohit Jain

Mr. Bipin Bihari Das

Dr. Anjali Kulkarni

Mr. Manoj Joseph

Dr. Sampat Kale

Dr. Neelam Yadava

Dr. Byasa Moharana

Dr. Sai Thakur

Mr. Ram Rathod

Dr. Shahaji Narwade

Dr. Niladri Sekhar Dhar

Ms. Trupti Ratnaparkhi

Dr. Aparna Watve

Dr. Sridhar Modugu

Dr. Sri Krishna Sudheer Patoju

Dr. Gunvant A. Birajdar

Ms. Sasmita Swain

Dr. Roopesh Kaushik

Dr. Kalpana Dixit

Honourary Adjunct Faculty

Prof. Philippe Cadene

Mr. Satish Pradhan

Dr. Prashant Narnaware (IAS)

Deputy Librarian: Dr. Veeresh Hanchinal

Assistant Registrar: Mr. Sharath B.



TATA INSTITUTE OF SOCIAL SCIENCES
A Deemed University, established under
Section 3 of the UGC Act, 1956

TISS Tuljapur Off Campus
Post Box No. 9, Tuljapur 413 601
Osmanabad District, Maharashtra

Website: www.tiss.edu